

# 4-Way Blow Ceiling Suspended Cassette

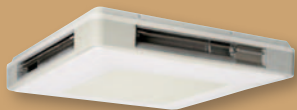
FUQ-B / RZQ-D(B9W1)



The unique ceiling suspended cassettes are the ideal solution for rooms without false ceilings. An excellent solution for larger areas with high occupancy and ceiling heights up to 3.5m.

- **RZQ Seasonal Inverter technology:** first light commercial range in the market optimised for Seasonal Efficiency. Takes account of multiple cooling/heating temperatures as well as unit operation at partial load instead of just full capacity. Will also consider the power consumed by equipment in auxiliary mode (thermostat off, standby mode, OFF mode).
- **Application flexibility:** Comms, computer and server room cooling possible. Also suitable for use in R-22 replacement projects.
- **Wired remote controller:** provides a 7-day schedule timer, enabling the user to program the air conditioning daily or weekly, with up to 5 different actions per day possible (BRC1D52 standard / BRC1E51A optional).
- **BRC1E51A – New optional wired controller:** allows easy navigation through menu items, via a personalised display and minimal number of buttons.
- **Home Leave operation:** automatically keeps the room temperature at a specified comfort level during extended absence by switching to heating when it reaches the minimum level and to cooling at the maximum level.
- **Air flow flexibility:** air can be discharged in any of 4 directions. Possibility to shut off 1 or 2 flaps enabling the unit to be also installed in a corner or in a small room.
- **Comfortable air distribution:** vertical auto swing of the flaps and the 5 different air flow patterns available ensure the best distribution of the air throughout the whole room.
- **Air purification filter:** removes airborne dust particles to ensure a steady supply of clean air.
- **Self diagnosis digital display:** in the unlikely event that an abnormality occurs, the LCD remote controller displays the error code allowing prompt maintenance.
- **Auto-restart function:** after a power failure in the building, the system automatically restarts to the setting in operation before the power failure.

Height	165mm
Width	895mm
Depth	895mm



FUQ71B

Height	770mm
Width	900mm
Depth	320mm



RZQ71D

See tables overleaf for full list of dimensions

**ENERGY LABEL:  
UP TO CLASS  
A**

# HEAT PUMP

# SEASONAL INVERTER

Indoor Units				FUQ71B	FUQ100B	FUQ125B		
Capacity	Cooling capacity	Standard	kW	7.1	10	12.5		
	Heating capacity	Standard	kW	8.0	11.2	14.0		
Nominal	EER / COP	Cooling / Heating		3.21 / 3.42	3.37 / 3.38	3.21 / 3.41	3.16 / 3.29	
	Annual energy consumption		kWh	1,105	1484	1560	1978	
	Energy Label	Cooling / Heating		A / B	A / C	A / B	B / C	
Seasonal (*)	SEER / SCOP	Cooling / Heating		3.57 / -	3.21 / -	3.08 / -	3.50 / -	
Dimensions	(Height x Width x Depth)		mm	165x895x895	230x895x895			
Weight			kg	25.0	31.0			
Air Flow Rate	Cooling	High/Low	m <sup>3</sup> /min	19.0 / 14.0	29.0 / 21.0	32.0 / 23.0		
	Heating	High/Low	m <sup>3</sup> /min	19.0 / 14.0	29.0 / 21.0	32.0 / 23.0		
Sound Power	Cooling	High/Low	dBA	56.0 / 51.0	59.0 / 54.0	60.0 / 55.0		
	Heating	High/Low	dBA	56.0 / 51.0	59.0 / 54.0	60.0 / 55.0		
Sound Pressure	Cooling	High/Low	dBA	40.0 / 35.0	43.0 / 38.0	44.0 / 39.0		
	Heating	High/Low	dBA	40.0 / 35.0	43.0 / 38.0	44.0 / 39.0		
Refrigerant			Type	R-410A				
Power Supply				1~/220-240V/50Hz				
Controller	Wired/Wireless			BRC1D52 (standard) / BRC7C528 (optional) BRC1E51A (optional)				
Outdoor Unit				RZQ71D3V1	RZQ100D9V1	RZQ100B9W1	RZQ125D9V1	RZQ125B9W1
Dimensions	(Height x Width x Depth)		mm	770x900x320	1345x900x320		1345x900x320	
Weight			kg	67	108	106	108	106
Operation Range	Cooling	Min~Max	°CDB	-15.0~-50.0				
	Heating	Min~Max	°CWB	-20.0~-15.5				
Sound Power	Cooling		dBA	64	65	67	66	
Sound Pressure (Standard)	Cooling		dBA	48	50	51	50	
	Heating		dBA	50	52	53	52	
Sound Level (Night quiet)	Sound Pressure		dBA	43	45			
Refrigerant			Type	R-410A				
Power Supply				1~/220-240V/50Hz	1~/220-240V/50Hz	3N~/400V/50Hz	1~/220-240V/50Hz	3N~/400V/50Hz
Piping connections	Liquid (OD)/Gas/Drain		mm	9.52 / 15.9 / 26				
Piping Length (Maximum)			m	50	75			
Max. internunit level difference			m	0.5				
Max installation height difference			m	30				

(\*) Seasonal efficiencies are calculated based on draft PrEn 14825: 2009 (under inquiry stage). Data are subject to change.



Authorised User No. 02061

Visit [www.eca.gov.uk/etl](http://www.eca.gov.uk/etl) and type 'Daikin' in the quick search box for details of the latest ECA qualifying Daikin units

[www.daikin.co.uk](http://www.daikin.co.uk)

Daikin products are distributed by:



Daikin units comply with the European regulations that guarantee the safety of the product.

Daikin Europe N.V. participates in the Eurovent Certification Programme for Air Conditioners (AC), Liquid Chilling Packages (LCP) and Fan Coil Units (FC); the certified data of certified models are listed in the Eurovent Directory. Multi units are Eurovent certified for combinations up to 2 indoor units.

The present leaflet is drawn up by way of information only and does not constitute an offer binding upon Daikin UK. Daikin UK has compiled the content of this leaflet to the best of its knowledge. No express or implied warranty is given for the completeness, accuracy, reliability or fitness for particular purpose of its content and the products and services presented therein. Specifications are subject to change without prior notice. Daikin UK explicitly rejects any liability for any direct or indirect damage, in the broadest sense, arising from or related to the use and/or interpretation of this leaflet. All content is copyrighted by Daikin UK.