

Sound enclosure
Air Conditioning
Technical Data
EKLN140A



TABLE OF CONTENTS

EKLN140A

1	Features	4
	EKLN-A	4
2	Specifications	5
3	Dimensional drawings	6
4	Centre of gravity	7
5	Capacity tables	8
	Capacity Correction Factor	8
6	Sound data – Sky Air Alpha-series	9
	Sound Power Spectrum - Cooling	9
	Sound Power Spectrum - Heating	11
	Sound Pressure Spectrum - Cooling	13
	Sound Pressure Spectrum - Heating	15
7	Sound data	17
	Intrinsic sound absorption of sound cover	17

1 Features

1 - 1 EKLN-A

Reduces the sound power level of the outdoor unit

- 1 > Enabling to meet strict sound requirements, while increasing flexibility to apply heat pumps
- > Fully optimized and tested in Daikin Factory for guaranteed performance

- > Very low capacity and pressure drop thanks to separated air intake and discharge to prevent short circuit
- > No additional calculations needed thanks to officially tested data
- > Fast and easy installation & servicing thanks easy opening to reach the unit



2 Specifications

1 - 1 EKLN-A

Technical specifications				EKLN140A
Casing	Colour			Anthracite grey
	Material			Sheet metal
Dimensions	Unit	Height	mm	1,100
		Width	mm	1,400
		Depth	mm	1,500
	Packed unit	Height	mm	1,017
		Width	mm	1,517
		Depth	mm	917
Weight	Unit			152
	Packed unit			186

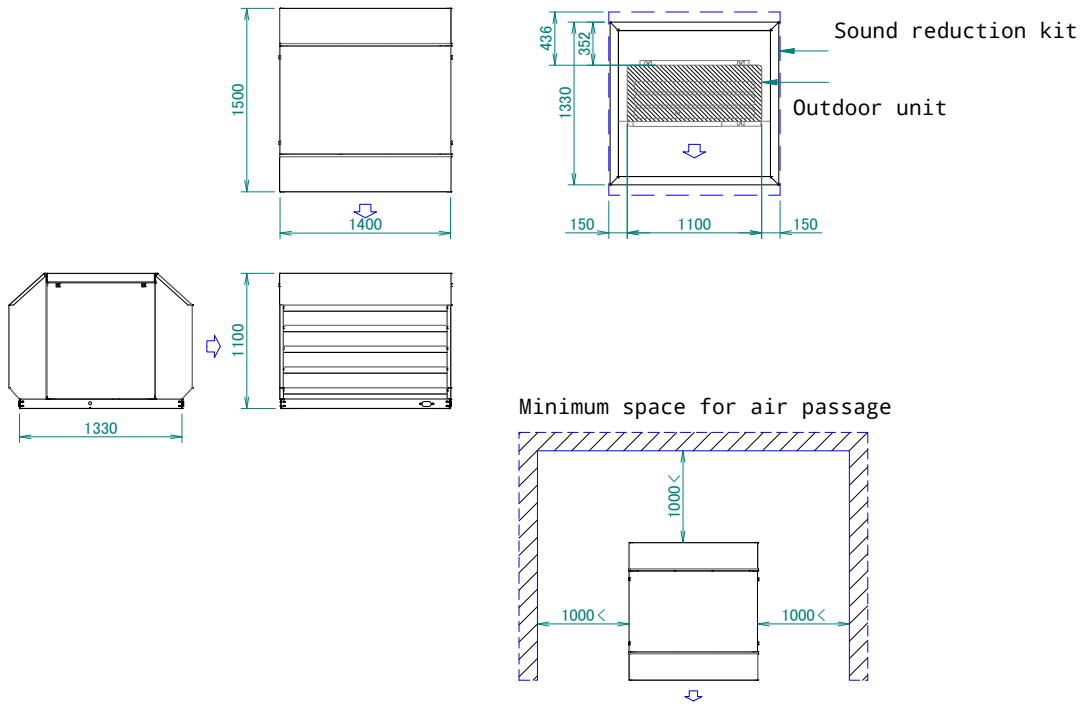
Standard accessories: Installation manual; Quantity: 1;

3 Dimensional drawings

3 - 1 Dimensional Drawings

3

EKLN140A

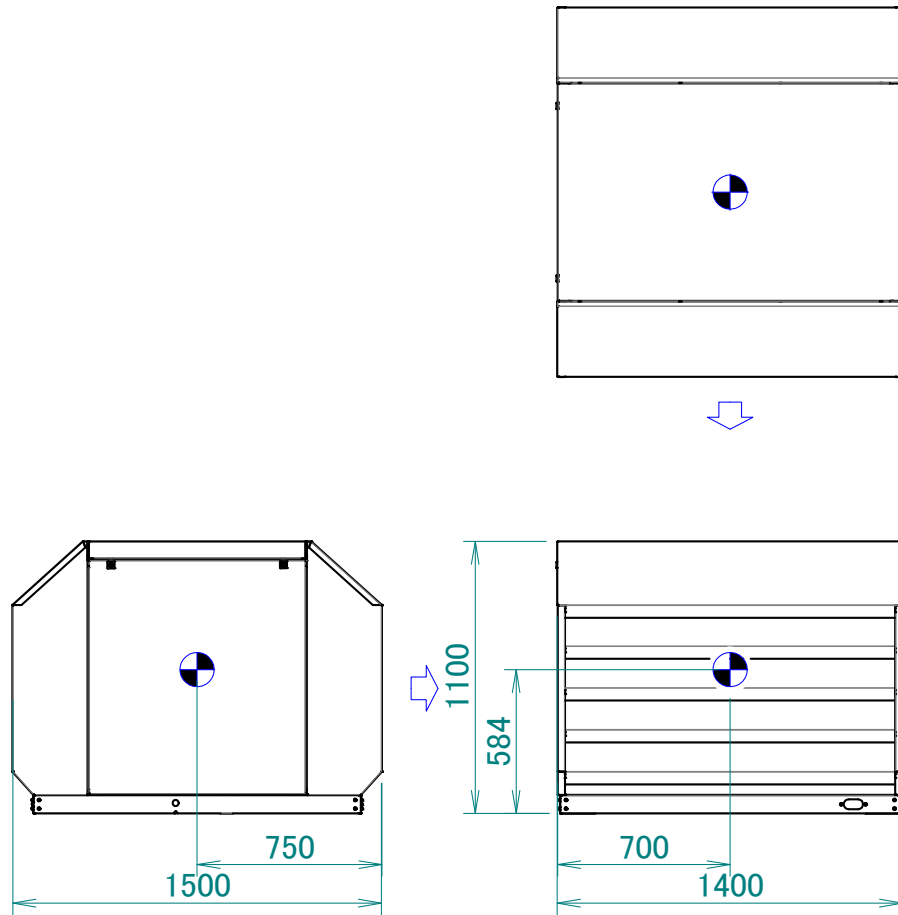


3D133856

4 Centre of gravity

4 - 1 Centre of Gravity

EKLN140A



☉ Centre of gravity

3D133857

5 Capacity tables

5 - 1 Capacity Correction Factor

5

EKLN140A / RZAG-N

Outdoor unit		Indoor unit					
RZAG71N		FCAHG71H		FCAG71B		FBA71A	
		Unit	Unit Sound ^o redu ction kit	Unit	Unit Sound ^o redu ction kit	Unit	Unit Sound ^o redu ction kit
Cooling	SEER	7.90	6.72	6.83	5.81	6.50	5.53
	$\eta_{s,c}(\%)$	-	-	-	-	-	-
Heating	SCOP	4.56	4.10	4.22	3.80	4.20	3.78
	$\eta_{s,h}(\%)$	-	-	-	-	-	-

Outdoor unit		Indoor unit					
RZAG100N		FCAHG100H		FCAG100B		FBA100A	
		Unit	Unit Sound ^o redu ction kit	Unit	Unit Sound ^o redu ction kit	Unit	Unit Sound ^o redu ction kit
Cooling	SEER	7.70	6.62	7.14	6.07	6.47	5.50
	$\eta_{s,c}(\%)$	-	-	-	-	-	-
Heating	SCOP	4.75	4.44	4.53	4.14	4.36	4.01
	$\eta_{s,h}(\%)$	-	-	-	-	-	-

Outdoor unit		Indoor unit					
RZAG125N		FCAHG125H		FCAG125B		FBA125A	
		Unit	Unit Sound ^o redu ction kit	Unit	Unit Sound ^o redu ction kit	Unit	Unit Sound ^o redu ction kit
Cooling	SEER	8.02	6.96	7.14	6.26	6.56	5.92
	$\eta_{s,c}(\%)$	318	275	283	247	259	234
Heating	SCOP	4.53	4.26	4.34	4.15	4.37	4.12
	$\eta_{s,h}(\%)$	178	167	171	163	172	162

Outdoor unit		Indoor unit					
RZAG140N		FCAHG140H		FCAG140B		FBA140A	
		Unit	Unit Sound ^o redu ction kit	Unit	Unit Sound ^o redu ction kit	Unit	Unit Sound ^o redu ction kit
Cooling	SEER	7.93	6.84	6.80	5.83	6.42	5.62
	$\eta_{s,c}(\%)$	314	271	269	230	254	222
Heating	SCOP	4.44	4.21	4.34	4.17	4.34	4.14
	$\eta_{s,h}(\%)$	175	165	171	164	171	162

	Correction ratio for maximum cooling capacity (%)	Correction ratio for maximum heating capacity (%)
RZAG71N	85	90
RZAG100N	86	90
RZAG125N	90	90
RZAG140N	90	90

Notes

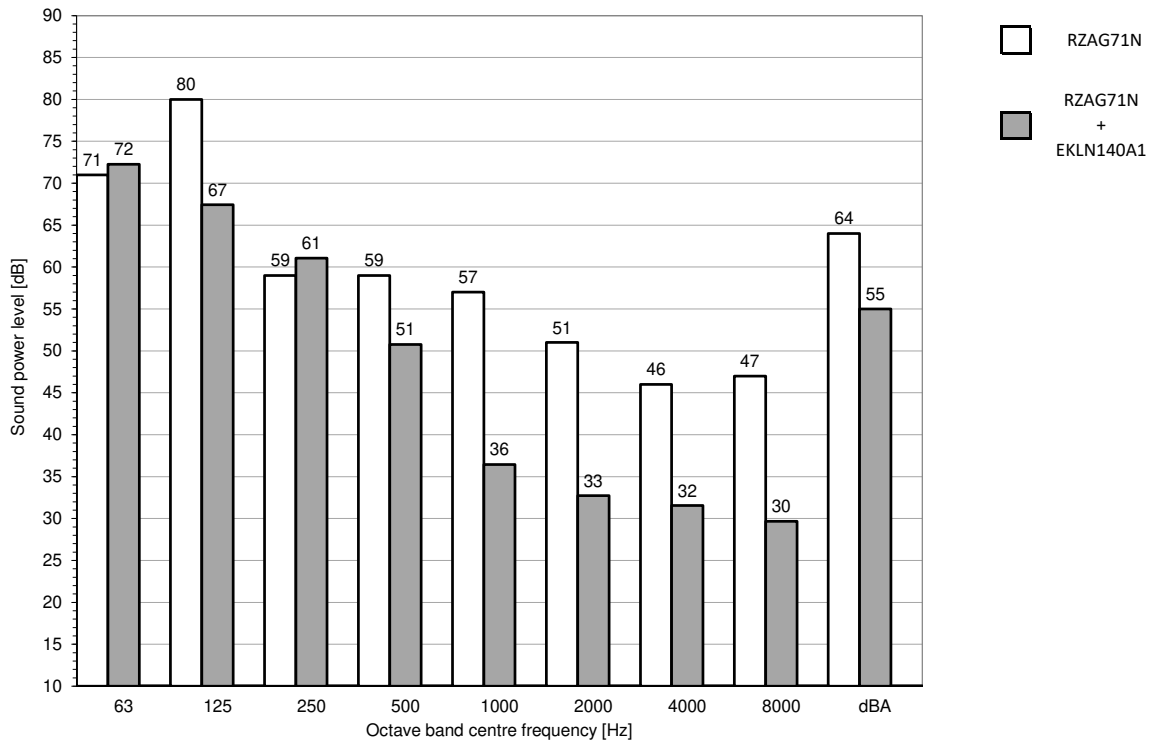
The value of the correction factor is indicative.

3D133862

6 Sound data – Sky Air Alpha-series

6 - 1 Sound Power Spectrum - Cooling

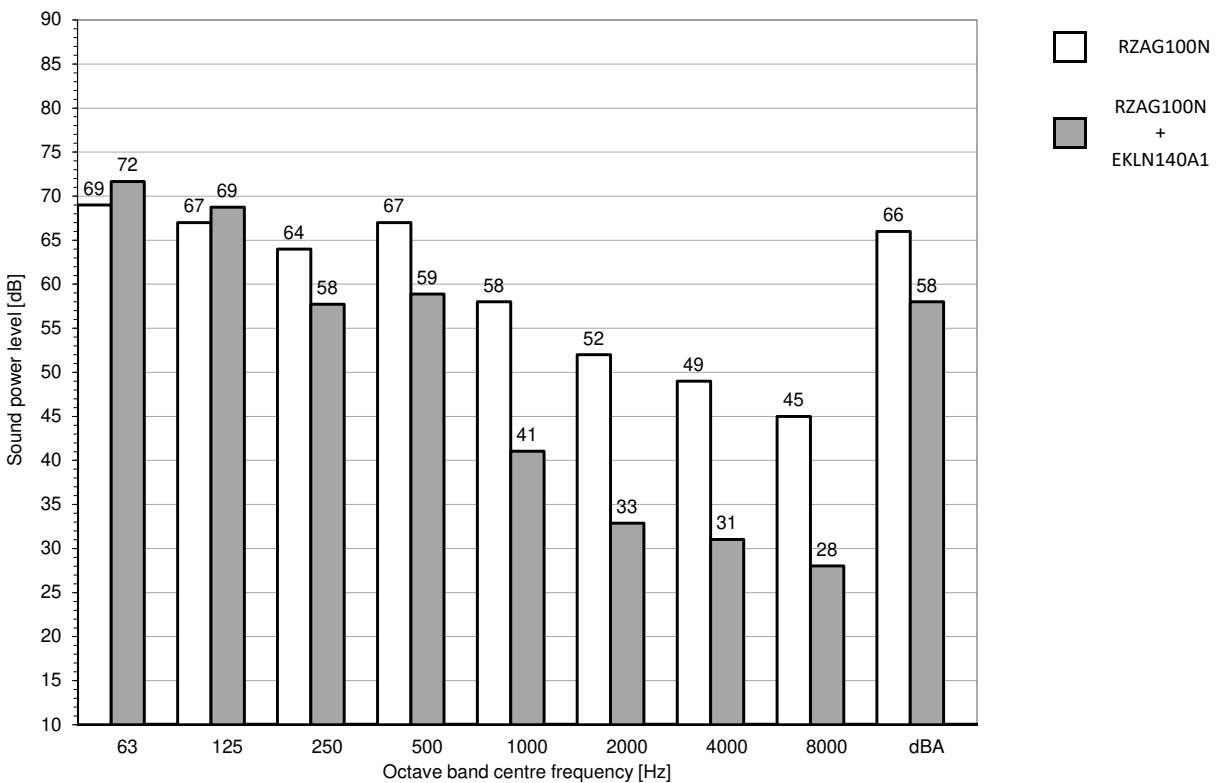
EKLN140A / RZAG71N



Notes

- dBA = A-weighted sound power level (A scale according to IEC).
- Reference acoustic intensity 0dB = 10^{-12} W
- Measured according to ISO 3744

4D134012



Notes

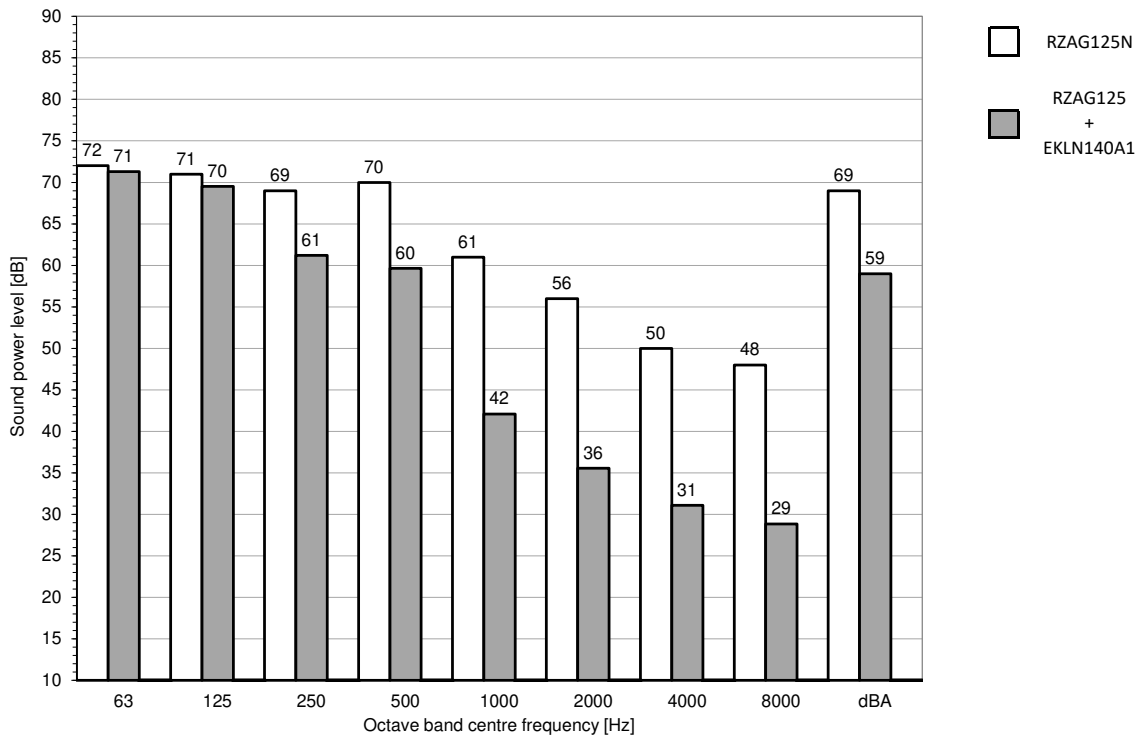
- dBA = A-weighted sound power level (A scale according to IEC).
- Reference acoustic intensity 0dB = 10^{-12} W
- Measured according to ISO 3744

6 Sound data – Sky Air Alpha-series

6 - 1 Sound Power Spectrum - Cooling

6

EKLN140A / RZAG125N

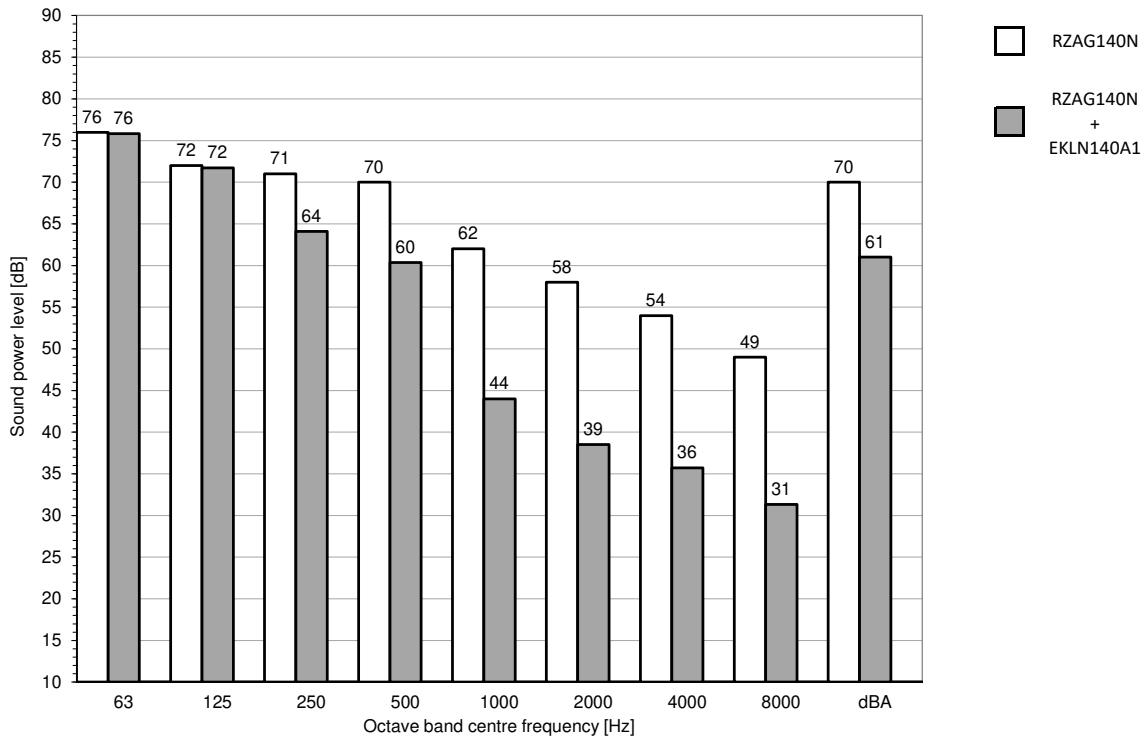


Notes

- dBA = A-weighted sound power level (A scale according to IEC).
- Reference acoustic intensity 0dB = 10^{-12} W.
- Measured according to ISO 3744

4D134026

EKLN140A / RZAG140N



Notes

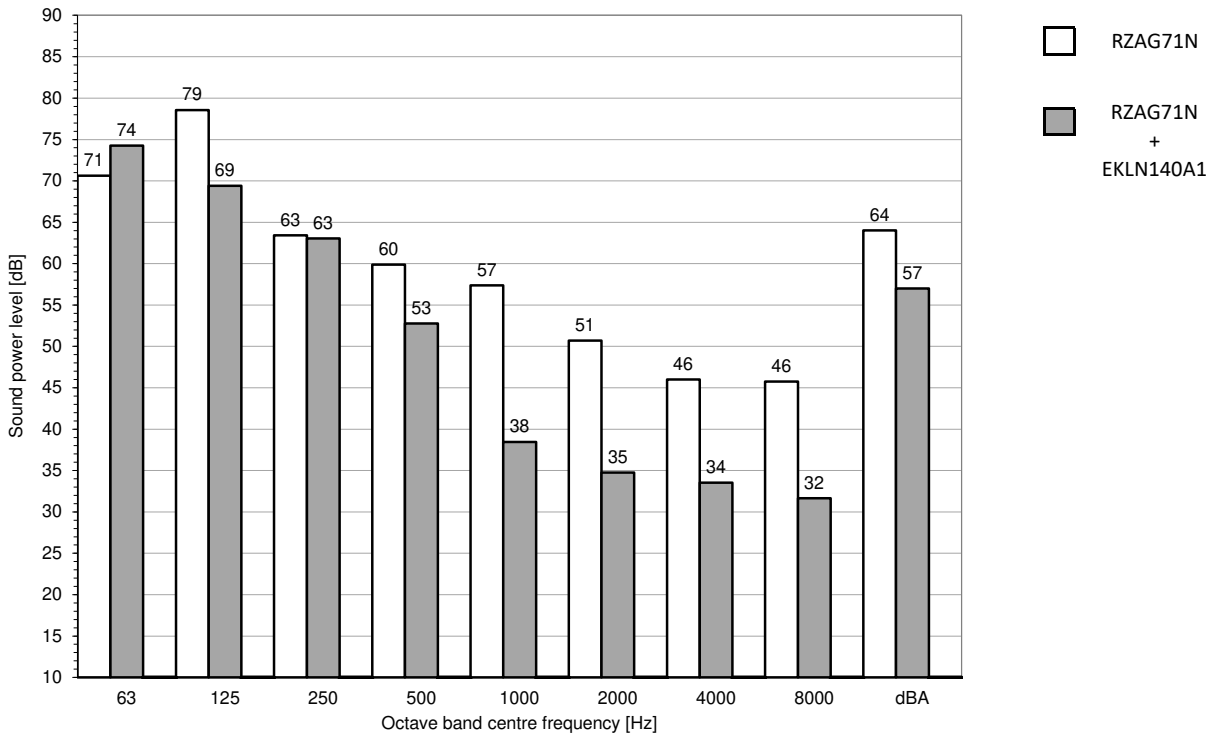
- dBA = A-weighted sound power level (A scale according to IEC).
- Reference acoustic intensity 0dB = 10^{-12} W.
- Measured according to ISO 3744

4D134033

6 Sound data – Sky Air Alpha-series

6 - 2 Sound Power Spectrum - Heating

EKLN140A / RZAG71N

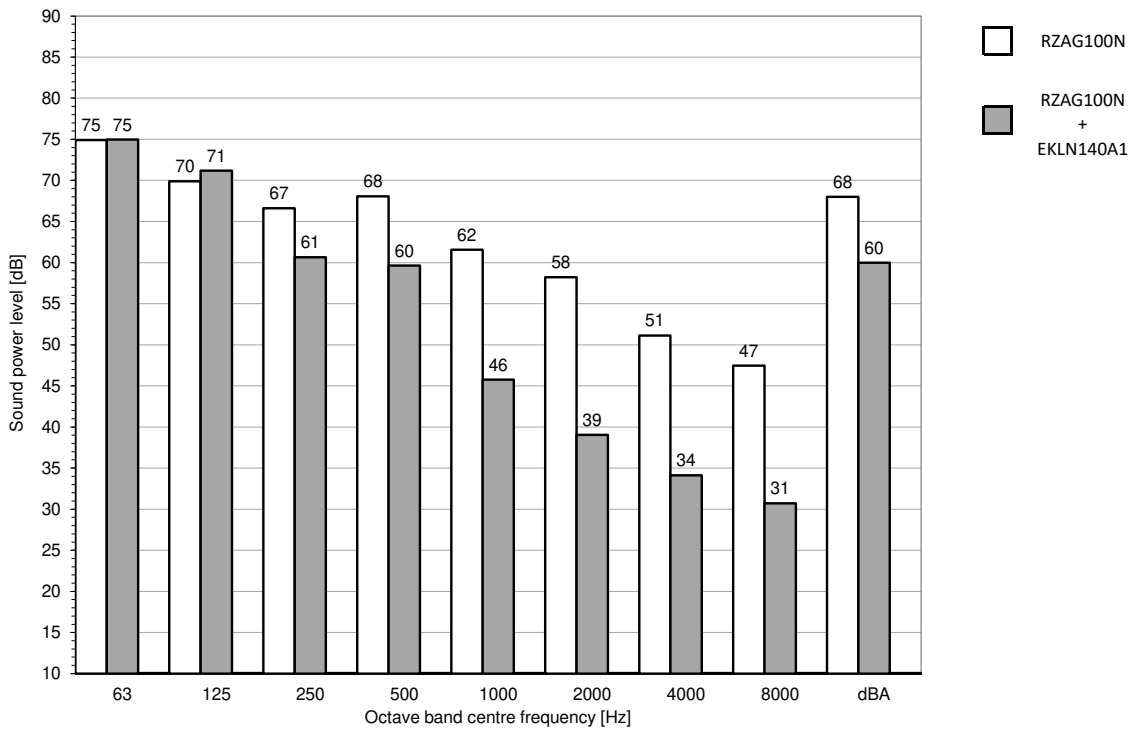


Notes

- dBA = A-weighted sound power level (A scale according to IEC).
- Reference acoustic intensity 0dB = $\cdot 10^{-12}$ W
- Measured according to ISO 3744

4D134013

EKLN140A / RZAG100N



Notes

- dBA = A-weighted sound power level (A scale according to IEC).
- Reference acoustic intensity 0dB = $\cdot 10^{-12}$ W
- Measured according to ISO 3744

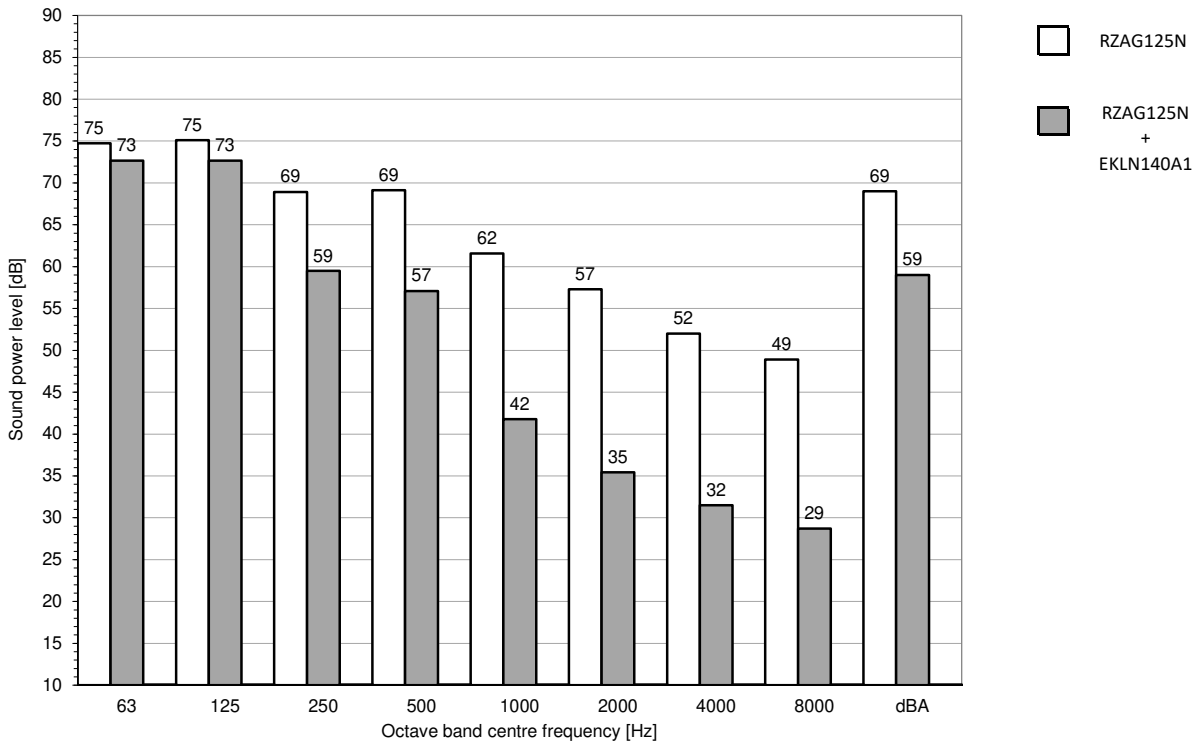
4D134020

6 Sound data – Sky Air Alpha-series

6 - 2 Sound Power Spectrum - Heating

6

EKLN140A1 / RZAG125N

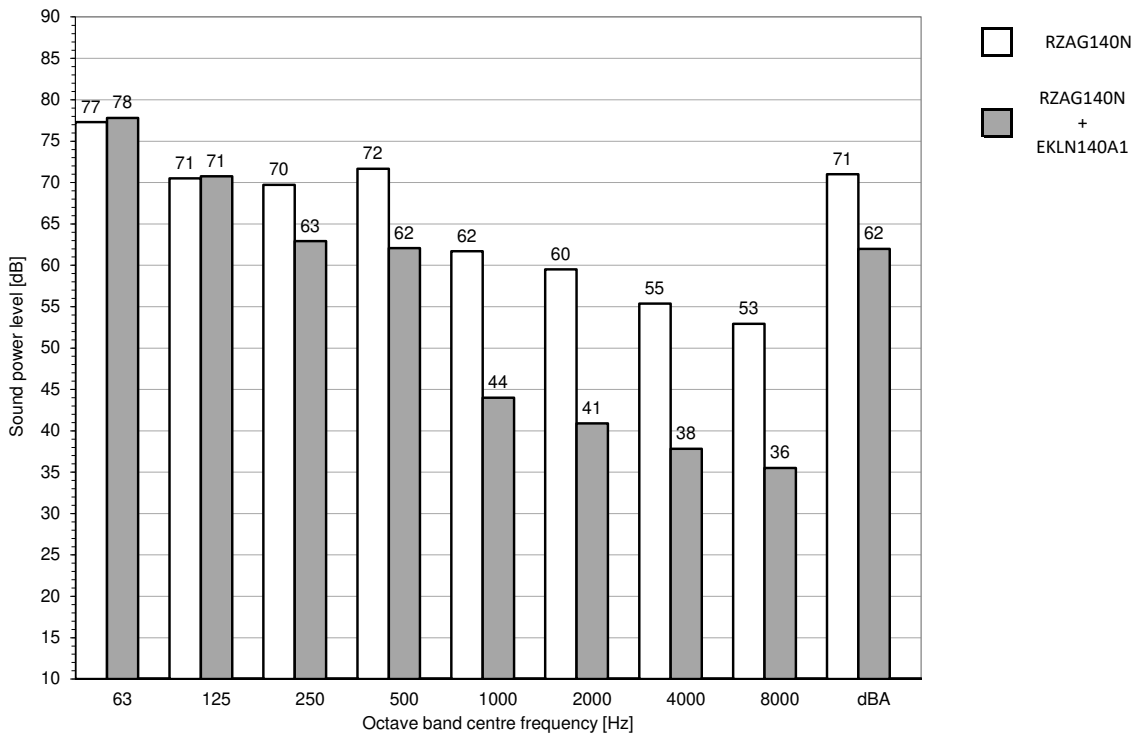


Notes

- dBA = A-weighted sound power level (A scale according to IEC).
- Reference acoustic intensity 0dB = ·10⁻¹² W·
- Measured according to ISO 3744

4D134027

EKLN140N / RZAG140N



Notes

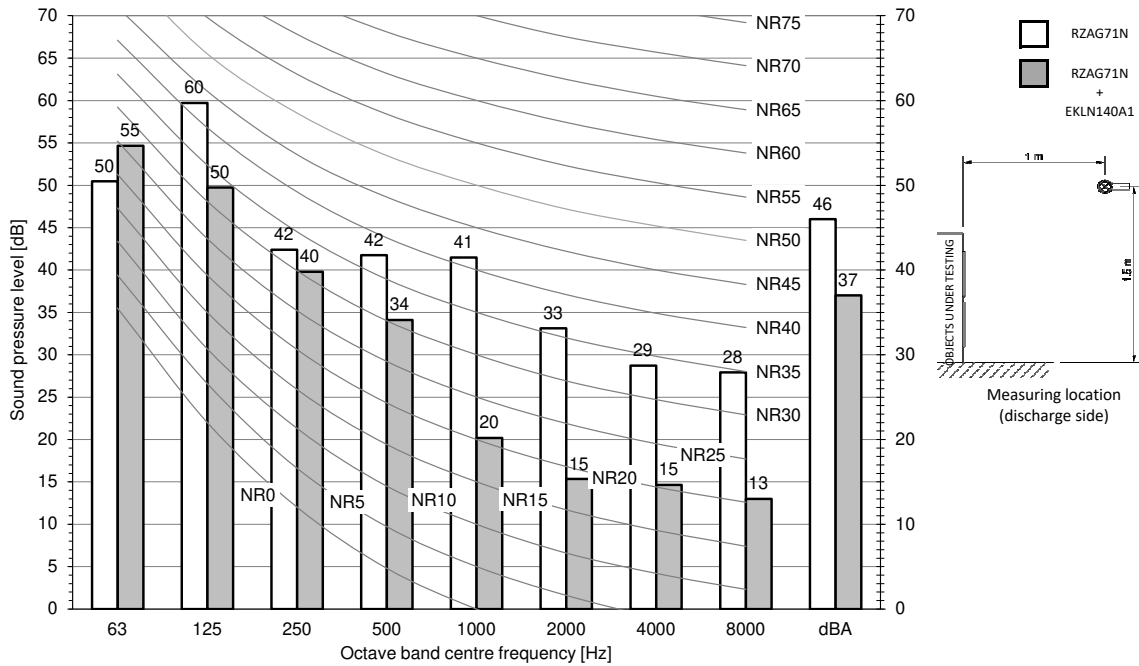
- dBA = A-weighted sound power level (A scale according to IEC).
- Reference acoustic intensity 0dB = ·10⁻¹² W·
- Measured according to ISO 3744

4D134034

6 Sound data – Sky Air Alpha-series

6 - 3 Sound Pressure Spectrum - Cooling

EKLN140A / RZAG71N

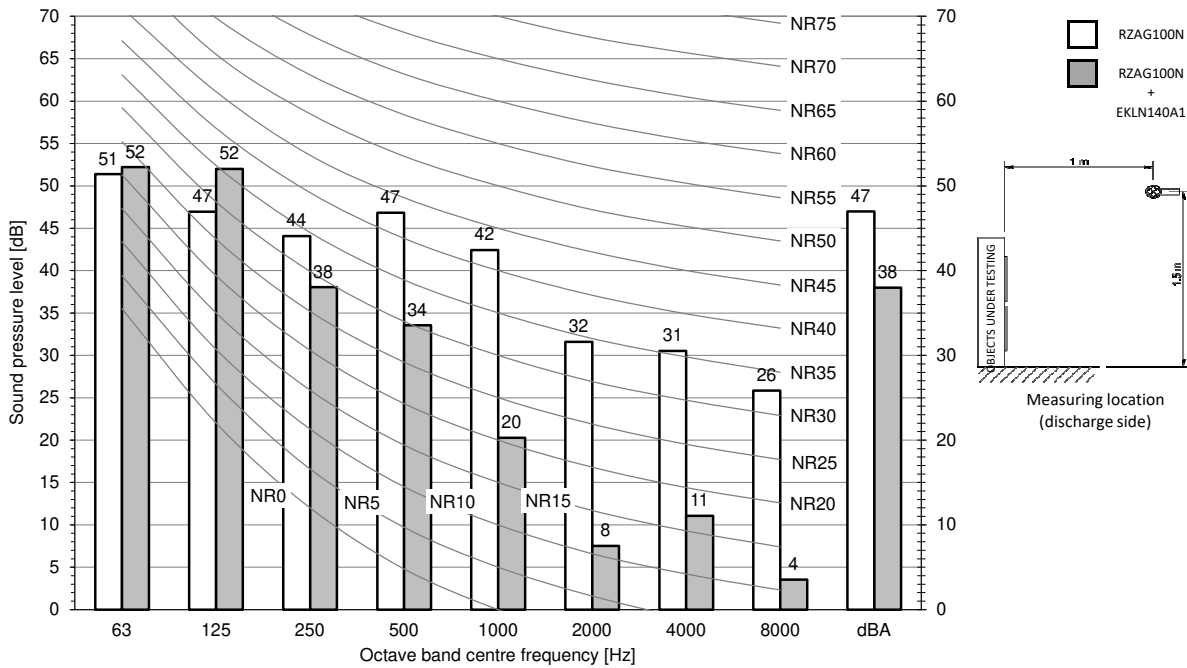


Notes

- Data is valid at free field condition.
- Data is valid at nominal operation condition.
- dBA = A-weighted sound pressure level (A scale according to IEC).
- Reference acoustic pressure 0 dB = 20 µPa

4D134014

EKLN140A / RZAG100N



Notes

- Data is valid at free field condition.
- Data is valid at nominal operation condition.
- dBA = A-weighted sound pressure level (A scale according to IEC).
- Reference acoustic pressure 0 dB = 20 µPa

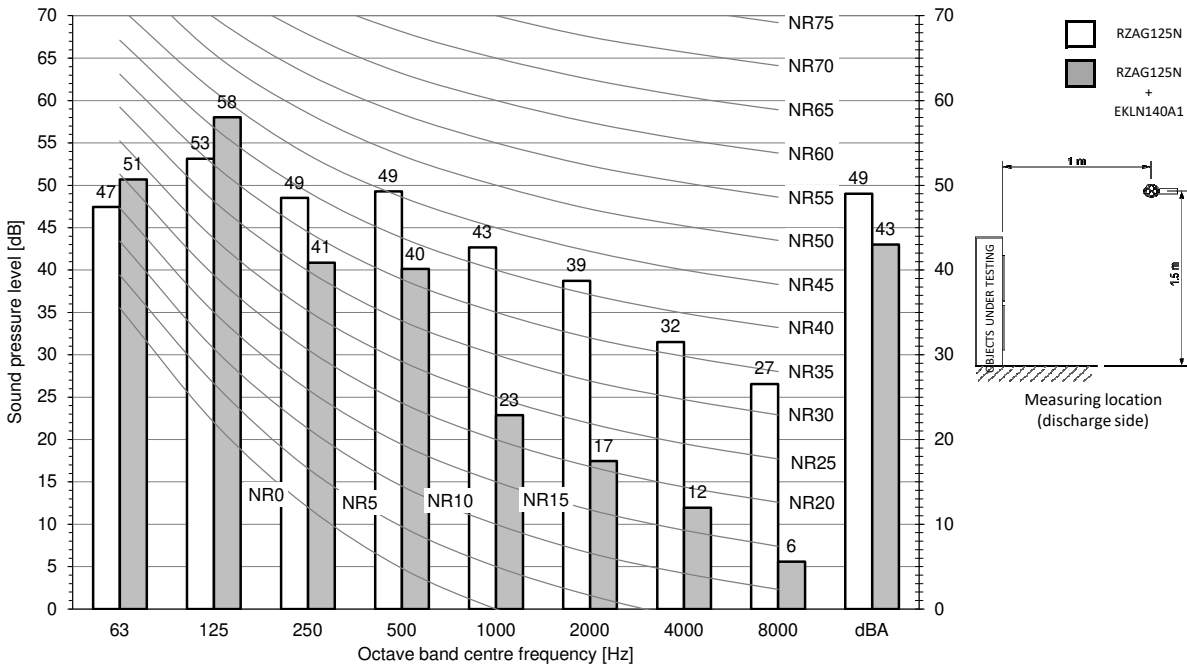
4D134021

6 Sound data – Sky Air Alpha-series

6 - 3 Sound Pressure Spectrum - Cooling

6

EKLN140A / RZAG125N

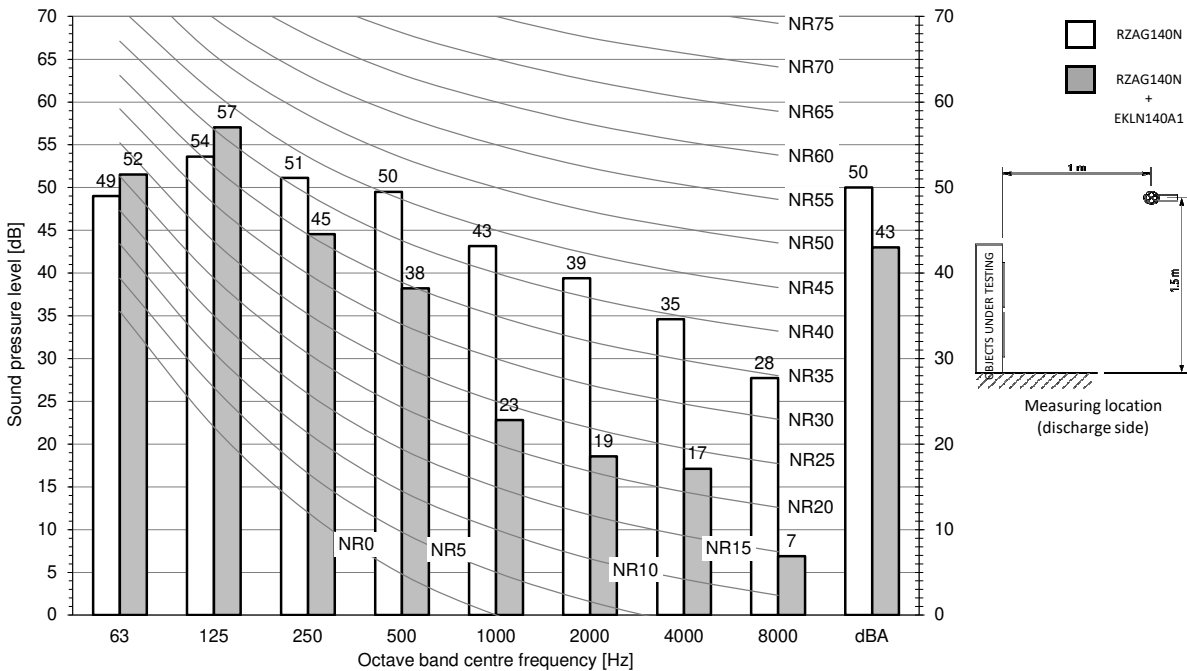


Notes

- Data is valid at free field condition.
- Data is valid at nominal operation condition.
- dBA = A-weighted sound pressure level (A scale according to IEC).
- Reference acoustic pressure 0 dB = 20 µPa

4D134028

EKLN140A / RZAG140N



Notes

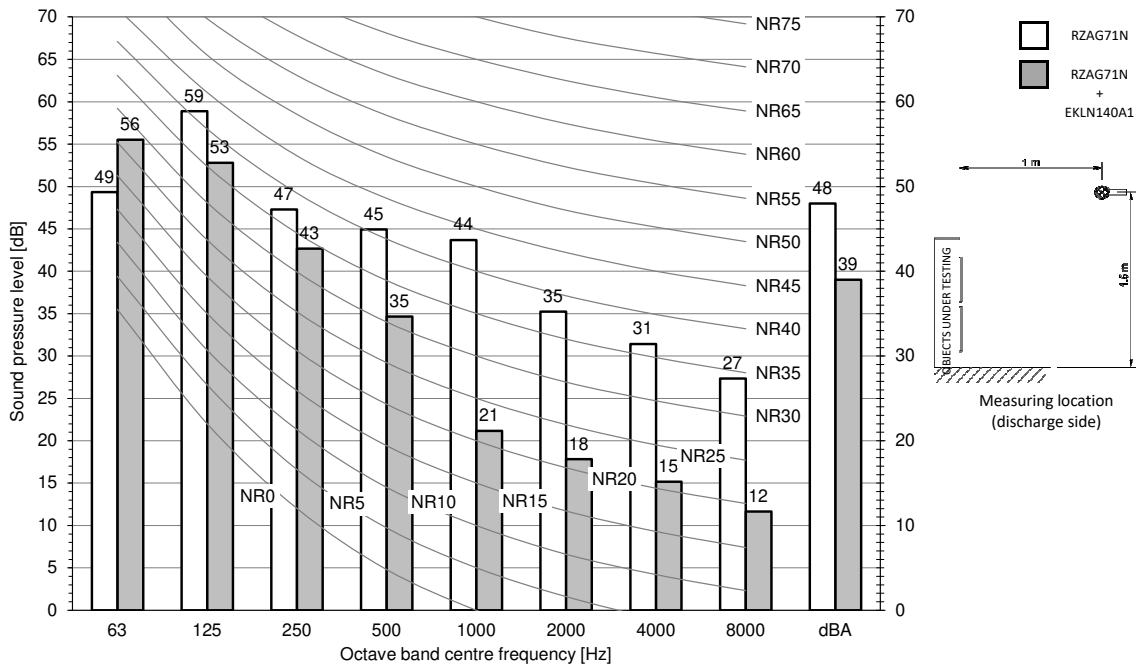
- Data is valid at free field condition.
- Data is valid at nominal operation condition.
- dBA = A-weighted sound pressure level (A scale according to IEC).
- Reference acoustic pressure 0 dB = 20 µPa

4D134035

6 Sound data – Sky Air Alpha-series

6 - 4 Sound Pressure Spectrum - Heating

EKLN140A / RZAG71N

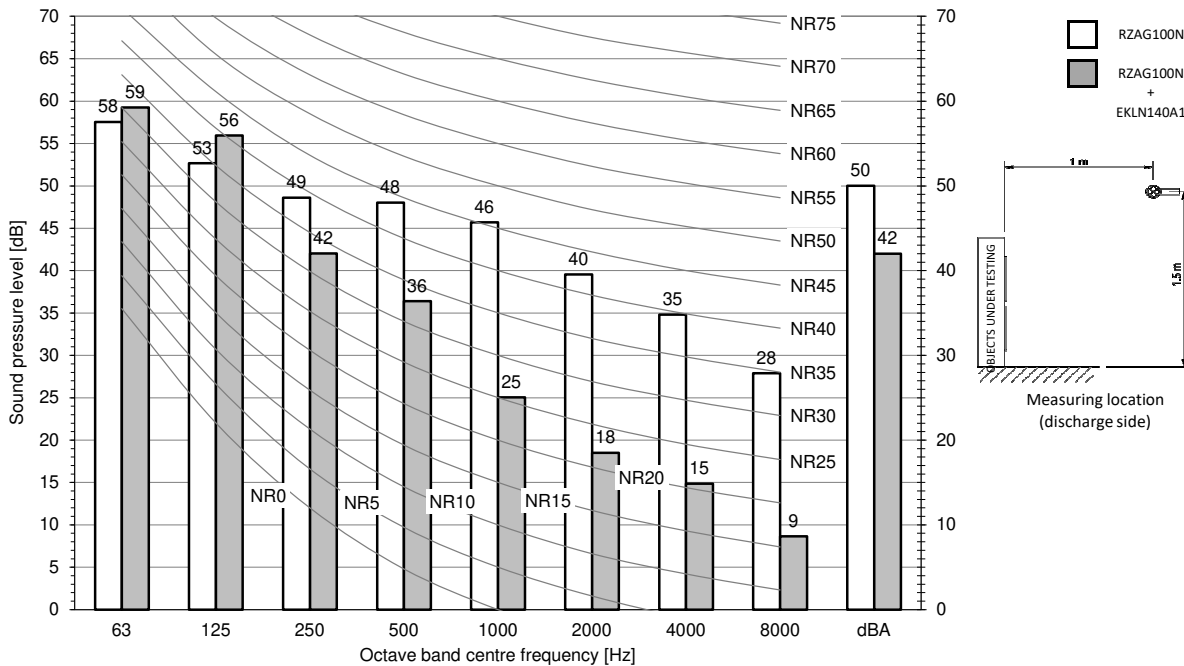


Notes

- Data is valid at free field condition.
- Data is valid at nominal operation condition.
- dBA = A-weighted sound pressure level (A scale according to IEC).
- Reference acoustic pressure 0 dB = 20 μPa

4D134015

EKLN140A / RZAG100N



Notes

- Data is valid at free field condition.
- Data is valid at nominal operation condition.
- dBA = A-weighted sound pressure level (A scale according to IEC).
- Reference acoustic pressure 0 dB = 20 μPa

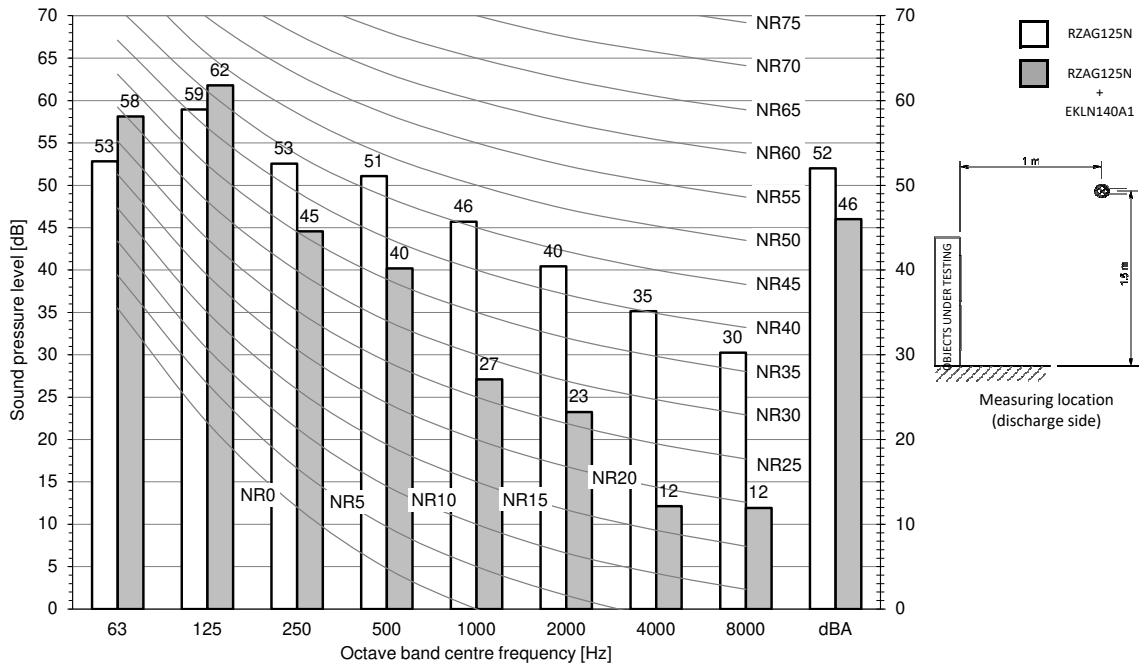
4D134022

6 Sound data – Sky Air Alpha-series

6 - 4 Sound Pressure Spectrum - Heating

6

EKLN140A / RZAG125N

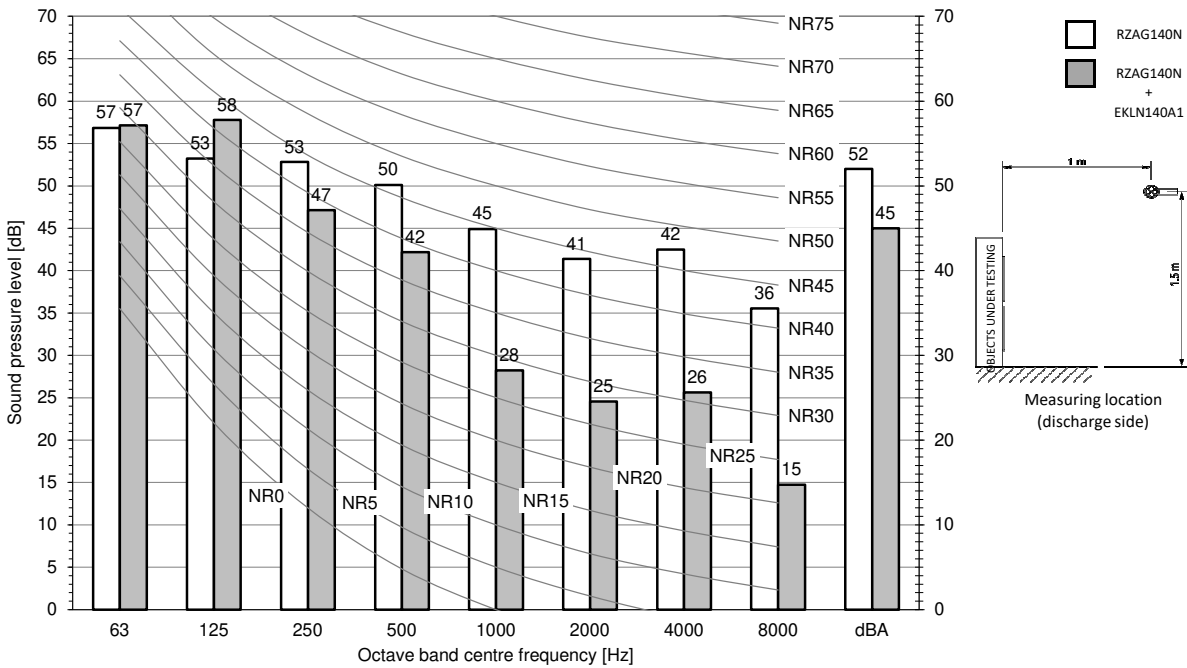


Notes

- Data is valid at free field condition.
- Data is valid at nominal operation condition.
- dBA = A-weighted sound pressure level (A scale according to IEC).
- Reference acoustic pressure 0 dB = 20 µPa

4D134029

EKLN140A / RZAG140N



Notes

- Data is valid at free field condition.
- Data is valid at nominal operation condition.
- dBA = A-weighted sound pressure level (A scale according to IEC).
- Reference acoustic pressure 0 dB = 20 µPa

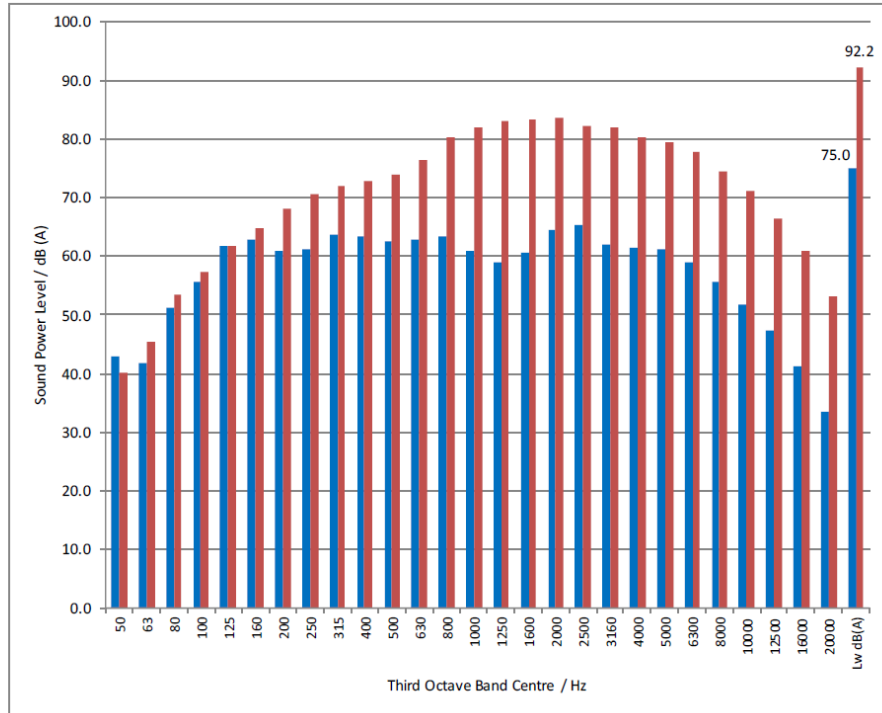
4D134036

7 Sound data

7 - 1 Intrinsic sound absorption of sound cover

EKLN140A

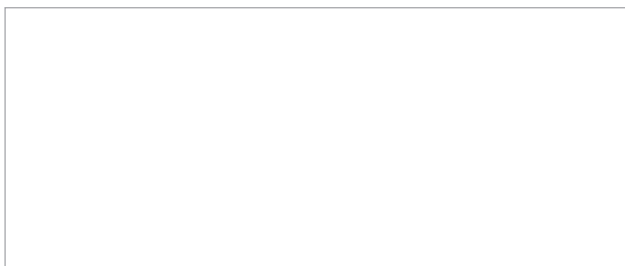
1/3 octave band	L _w dB(A)	RSS	IL dB
50	43.0	40.1	-2.9
63	41.8	45.3	3.6
80	51.2	53.5	2.3
100	55.6	57.4	1.8
125	61.7	61.8	0.1
160	63.0	64.8	1.8
200	60.9	68.0	7.1
250	61.2	70.6	9.4
315	63.7	71.9	8.2
400	63.5	72.8	9.3
500	62.6	73.9	11.2
630	62.9	76.5	13.7
800	63.4	80.2	16.8
1000	61.0	82.0	21.0
1250	59.1	83.1	24.0
1600	60.6	83.4	22.8
2000	64.4	83.7	19.3
2500	65.3	82.3	17.0
3160	62.1	82.0	20.0
4000	61.6	80.2	18.6
5000	61.1	79.6	18.5
6300	59.1	77.7	18.7
8000	55.6	74.4	18.8
10000	51.8	71.1	19.4
12500	47.2	66.5	19.3
16000	41.4	60.9	19.6
20000	33.4	53.1	19.8
L_w dB(A)	75.0	92.2	17.2



Legend

RSS: Reference sound source
 → B&K type 4204 RSS
 IL : Insertion loss
 L_w : Sound Power Level [dBA]

3D133863A



EEEDEN21

04/2021



The present publication is drawn up by way of information only and does not constitute an offer binding upon Daikin South Africa. Daikin South Africa has compiled the content of this publication to the best of its knowledge. No express or implied warranty is given for the completeness, accuracy, reliability or fitness for particular purpose of its content and the products and services presented therein. Specifications are subject to change without prior notice. Daikin South Africa explicitly rejects any liability for any direct or indirect damage, in the broadest sense, arising from or related to the use and/or interpretation of this publication. All content is copyrighted by Daikin South Africa.