

1 Specifications

| 1-1 TECHNICAL SPECIFICATIONS | | | | BSV6Q100PV1 | |
|---|---------------|----------|----|--|--|
| Maximum capacity index of connectable indoor units | | | | 600 | |
| Maximum capacity index of connectable indoor units per branch | | | | 100 | |
| Number of branches | | | | 6 | |
| Maximum number of connectable indoor units | | | | 30 | |
| Maximum number of connectable indoor units per branch | | | | 5 | |
| Power input (nominal) | Cooling | kW | | 0.030 | |
| | Heating | kW | | 0.030 | |
| Casing | Material | | | Galvanised steel | |
| Dimensions | Unit | Height | mm | 209 | |
| | | Width | mm | 1,577 | |
| | | Depth | mm | 635 | |
| Weight | Unit | | kg | 89 | |
| Outdoor Unit | Liquid (OD) | Type | | Brazing connection | |
| | | Diameter | mm | 15.9 | |
| | Gas | Type | | Brazing connection | |
| | | Diameter | mm | 28.6 | |
| | Discharge Gas | Type | | Brazing connection | |
| | | Diameter | mm | 28.6 | |
| Indoor Units | Liquid (OD) | Type | | Brazing connection | |
| | | Diameter | mm | 9.5 | |
| | Gas | Type | | Brazing connection | |
| | | Diameter | mm | 15.9 | |
| Sound absorbing thermal insulation material | | | | Foamed polyurethane, Flame resisting needle felt | |
| Standard Accessories | Item | | | Installation manual | |
| | | | | Connection pipes | |
| | | | | Insulation pipe cover | |
| | | | | Clamps | |
| Notes | | | | In case of connection with a 20~50 type indoor unit, match to the size of the field pipe using the attached pipe. Connection between the attached pipe and the field pipe must be brazed. | |
| | | | | In case the joint diameter does not fit on the triple piping side, a reducer is needed (field supply) | |
| | | | | Insulators are necessary (field supply) for the triple piping side | |

| 1-2 ELECTRICAL SPECIFICATIONS | | | | BSV6Q100PV1 | |
|-------------------------------|----------------------------|--|----|--|--|
| Power Supply | Name | | | V1 | |
| | Phase | | | 1~ | |
| | Frequency | | Hz | 50 | |
| | Voltage | | V | 220-240 | |
| Voltage range | Minimum | | V | -10% | |
| | Maximum | | V | +10% | |
| Total circuit | Minimum circuit amps (MCA) | | A | 0.8 | |
| | Maximum Fuse Amps | | A | 15 | |
| Notes | | | | Voltage range : units are suitable for use on electrical systems where voltage supplied to unit terminal is not below or above listed range limits | |
| | | | | Maximum allowable voltage range variation between phases is 2% | |
| | | | | MCA / MFA : MCA = 1.25 x FLA | |
| | | | | MFA is smaller than or equal to 4 x FLA | |
| | | | | Next lower standard fuse rating minimum 15A | |
| | | | | Select wire size based on MCA | |
| | | | | Instead of a fuse, use a circuit breaker | |

2 Safety device settings

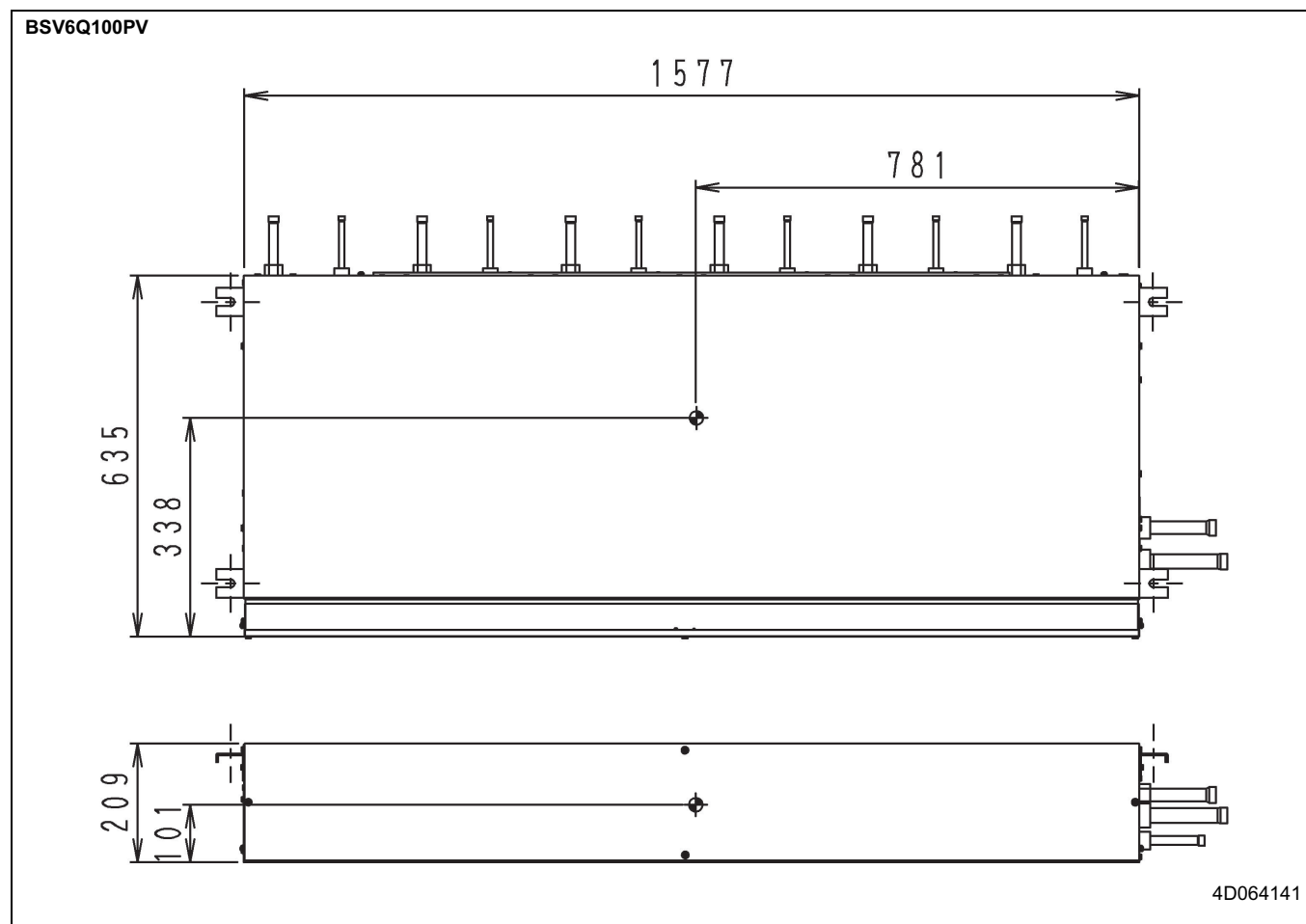
BSV4Q100PV
BSV6Q100PV

| Model | Safety devices |
|------------|----------------|
| | PC board fuse |
| BSV4Q100PV | 250V 3.15A |
| BSV6Q100PV | 250V 3.15A |

4D064144

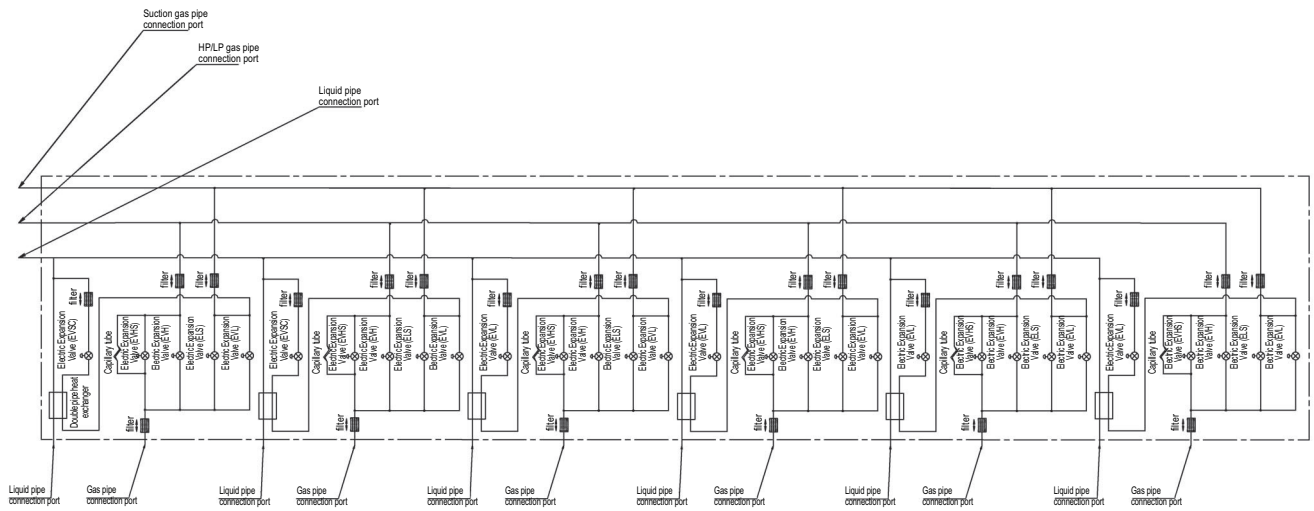
3 Dimensional drawing & centre of gravity

3 - 2 Centre of gravity



4 Piping diagram

BSV6Q100PV



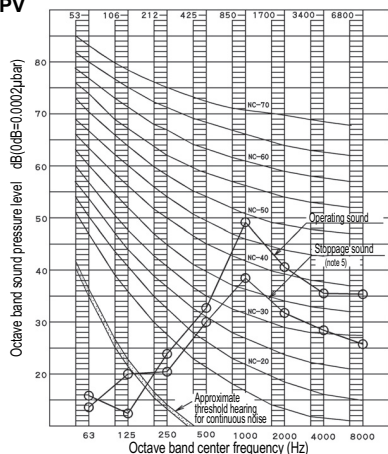
3D064149

6 Sound data

6 - 1 Sound pressure spectrum

1
6

BSV6Q100PV



4D064639

NOTE

- 1 Over All (dB):
(B, G, N is already rectified)
- 2 Operating conditions:
 - Power source: 220-240V 50Hz
 - Standard condition (JIS)
- 3 Measuring place: Anechoic chamber.
- 4 Operation noise differs with operation and ambient conditions.
- 5 In case of other unit operating in the same system, operating sound will be generated, even if indoor unit connected to BS unit is stopped.
- 6 Location of microphone.

| Scale | Operation sound | Stoppage sound |
|-------|-----------------|----------------|
| A | 50 | 40 |
| C | 51 | 44 |

