

### 3.10 “E” Indoor Unit: Failure of Transmission (Between Indoor unit PC Board and Fan PC Board)

Remote  
Controller  
Display

E

Applicable  
Models

FXMQ40~125P

Method of  
Malfunction  
Detection

Check the condition of transmission between indoor PC board (A1P) and PC board for fan (A2P) using computer.

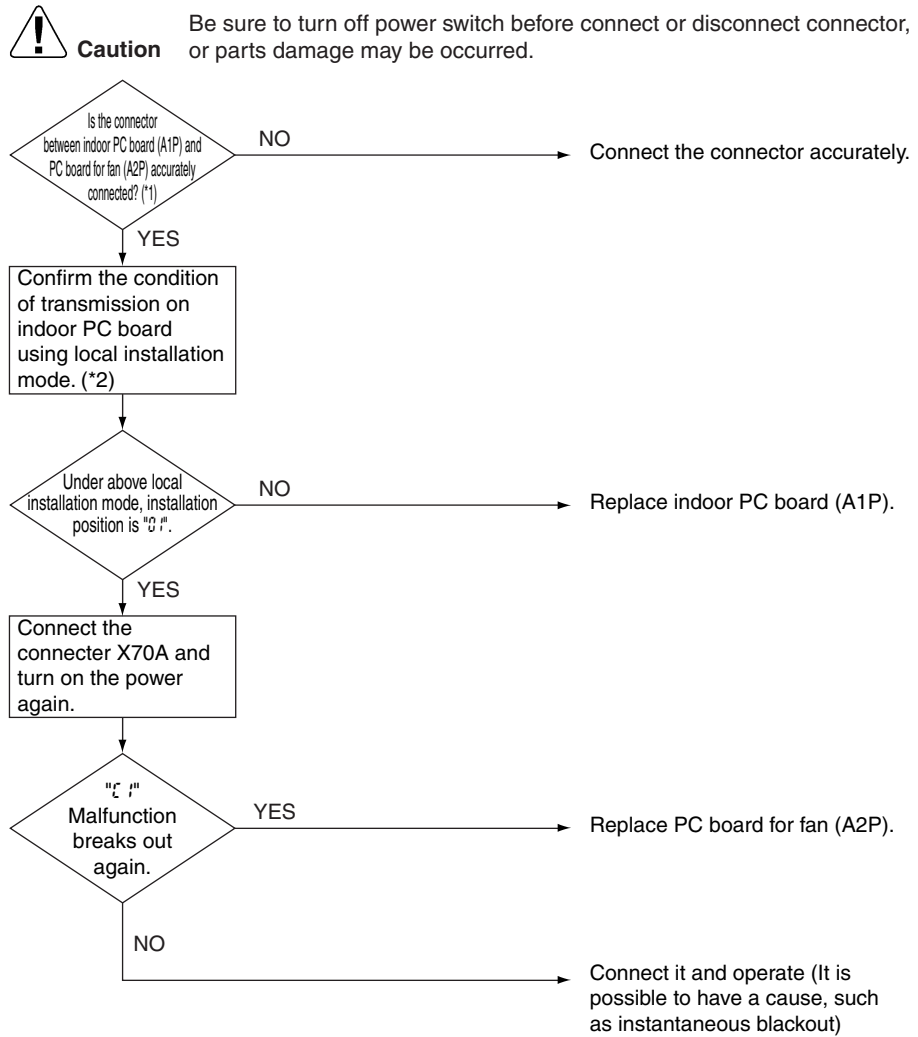
Malfunction  
Decision  
Conditions

When normal transmission is not conducted for certain duration.

Supposed  
Causes

- Connection defect of the connector between indoor PC board (A1P) and PC board for fan (A2P).
- Malfunction of indoor PC board (A1P).
- Malfunction of PC board for fan (A2P).
- External factor, such as instantaneous blackout.

Troubleshooting



\*1. Pull out and insert the connector once and check it is absolutely connected.

\*2. Method to check transmission part of indoor PC board.

- ① Turn off the power and remove the connector X70A of indoor PC board (A1P).
- ② Short-circuit X70A.
- ③ After turning on the power, check below numbers under local setting remote control.  
(Confirmation: Setting position NO. at the condition of setting switch No. 21 on mode No. 41)



Determination 

01: Normal
Other than 01: Transmission defect on indoor PC board

★ After confirmation, turn off the power, take off the short-circuit and connect X70A back to original condition.