

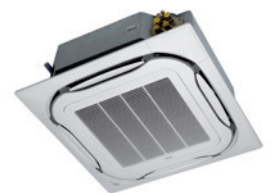


## FCAG-A / RZAG-M *SkyAir Alpha-series*

**R-32** BLUEEVOLUTION

### 360° air discharge for optimum efficiency and comfort

- › Combinations with Sky Air Alpha series ensures best in class quality, highest efficiency and performance
- › Lowest installation height in the market: 204mm for class 71
- › Individual louvre control: flexibility to suit every room layout without changing the location of the unit
- › Modern style decoration panel is available in 3 different variations: white (RAL9010) with grey louvers, full white (RAL9010) or Auto-cleaning panel
- › Automatic filter cleaning results in higher efficiency & comfort and lower maintenance costs. 2 filters available: standard filter and finer mesh filter (for fine dust applications i.e. clothing shops)
- › Two optional intelligent sensors improve energy efficiency and comfort
- › No optional adapter needed for DIII-connection, link your unit directly into the wider building management system
- › Branch duct discharge allows to optimize air distribution in irregular shaped rooms or to supply air to small adjacent rooms
- › Reduced energy consumption thanks to specially developed small tube exchanger, DC fan motor and drain pump
- › Optional fresh air intake
- › Standard drain pump with 675mm lift increases flexibility and installation speed



FCAG-A



RZAG71

RZAG100-140



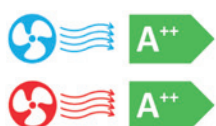
BRC1E53A



BRC7FA532F (optional)



BRP069A81 (optional)



**WI-FI ADAPTOR**  
AVAILABLE AS AN OPTION

# FCAG-A / RZAG-M

**R-32** BLUEEVOLUTION

Indoor Units			Single Phase				3 Phase			
			FCAG71A	FCAG100A	FCAG125A	FCAG140A	FCAG71A	FCAG100A	FCAG125A	FCAG140A
Capacity	UK Total Cooling	kW	7.28	10.80	13.60	14.90	7.28	10.80	13.60	14.90
	UK Sensible Cooling	kW	4.99	7.44	9.30	10.25	4.99	7.44	9.30	10.25
	Nominal Cooling	kW	6.8	9.5	12.0	13.4	6.8	9.5	12.0	13.4
	Nominal Heating	kW	7.5	10.8	13.5	15.5	7.5	10.8	13.5	15.5
Seasonal Efficiency (EN14825) COOLING	Energy Label		A++	A++	-	-	A++	A++	-	-
	Pdesign	kW	6.8	9.5	12.1	13.40	6.8	9.5	12.1	13.40
	SEER		6.86	7.14	7.80	7.17	6.86	7.14	7.80	7.17
	Annual Energy Consumption	kWh	347	466	931	1121	347	466	931	1121
Seasonal Efficiency (EN14825) HEATING	Energy Label		A+	A++	-	-	A+	A++	-	-
	Pdesign	kW	4.70	7.80	9.52	9.52	4.70	7.80	9.52	9.52
	SCOP		4.41	4.61	4.34	4.34	4.41	4.61	4.34	4.34
	Annual Energy Consumption	kWh	1492	2369	3071	3071	1492	2369	3071	3071
Nominal Efficiency	EER/COP		3.83/4.17	4.42/4.32	3.82/4.28	3.18/3.73	3.83/4.17	4.42/4.32	3.82/4.28	3.18/3.73
Air Flow Rate (Cooling)	High / Nom / Low	m³/sec	0.250 / 0.202 / 0.152	0.380 / 0.293 / 0.207	0.433 / 0.320 / 0.207	0.267 / 0.320 / 0.207	0.250 / 0.202 / 0.152	0.380 / 0.293 / 0.207	0.433 / 0.320 / 0.207	0.267 / 0.320 / 0.207
Dimensions (with Decoration Panel)	Height	mm	204 (264)	246 (306)	246 (306)	246 (306)	204 (264)	246 (306)	246 (306)	246 (306)
	Width	mm	840 (950)	840 (950)	840 (950)	840 (950)	840 (950)	840 (950)	840 (950)	840 (950)
	Depth	mm	840 (950)	840 (950)	840 (950)	840 (950)	840 (950)	840 (950)	840 (950)	840 (950)
Weight (with Decoration Panel)		kg	21 (26.4)	24 (29.4)	24 (29.4)	24 (29.4)	21 (26.4)	24 (29.4)	24 (29.4)	24 (29.4)
Sound Pressure (Cooling)	High / Nom / Low	dBA	33 / 31 / 28	37 / 33 / 29	41 / 35 / 29	41 / 35 / 29	33 / 31 / 28	37 / 33 / 29	41 / 35 / 29	41 / 35 / 29
Sound Pressure (Heating)	High / Nom / Low	dBA	33 / 31 / 28	37 / 33 / 29	41 / 35 / 29	41 / 35 / 29	33 / 31 / 28	37 / 33 / 29	41 / 35 / 29	41 / 35 / 29
Sound Power (Cooling)		dBA	51	54	58	58	51	54	58	58

Outdoor Units			RZAG71MV1	RZAG100MV1	RZAG125MV1	RZAG140MV1	RZAG71MY1	RZAG100MY1	RZAG125MY1	RZAG140MY1
Dimensions	Height x Width x Depth	mm	990 x 940 x 320	1430 x 940 x 320	1430 x 940 x 320	1430 x 940 x 320	990 x 940 x 320	1430 x 940 x 320	1430 x 940 x 320	1430 x 940 x 320
Weight		kg	70	92	92	92	70	92	92	92
Electrical Details	Power Supply		1ph	1ph	1ph	1ph	3ph	3ph	3ph	3ph
	Running Current	A	17.5	27.4	27.5	27.5	10.9	15.4	15.0	15.0
	Starting Current	A	-	-	-	-	-	-	-	-
	Max Fuse Size	A	20	32	32	32	16	16	16	16
Interconnection Wiring	Core / Cable size		3+E / 1.5				3+E / 1.5			
Piping Connections	Liquid / Gas	inches (mm)	3/8 (9.5) / 5/8 (15.9)				3/8 (9.5) / 5/8 (15.9)			
Pipework	Maximum Length	m	55	85	85	85	55	85	85	85
	Maximum Vertical Rise	m	30	30	30	30	30	30	30	30
	Precharged to	m	40	40	40	40	40	40	40	40
	Additional Charge	g/m	Refer to Installation Manual				Refer to Installation Manual			
	Holding Charge	kg	2.95	3.75	3.75	3.75	2.95	3.75	3.75	3.75
Sound Pressure (Cooling)	Nom / Night Quiet	dBA	46/42	47/44	50/44	51/44	46/42	47/44	50/44	51/44
Sound Pressure (Heating)	Nom / Night Quiet	dBA	49/42	51/44	52/44	52/44	49/42	51/44	52/44	52/44
Sound Power (Cooling)		dBA	64	66	69	70	65	66	69	70
Operating Range (Cooling)	Min / Max	°CDB	-20/52	-20/52	-20/52	-20/52	-20/52	-20/52	-20/52	-20/52
Operating Range (Heating)	Min / Max	°CWB	-20/18	-20/18	-20/18	-20/18	-20/18	-20/18	-20/18	-20/18
Air Flow Rate (Cooling)	Nom	m³/sec	0.983	1.166	1.383	1.383	0.983	1.166	1.383	1.383
ECA Eligible			●	●	●	●	●	●	●	●

Accessory Ref	Description
BRC1E53A	Premium wired remote controller (Included as standard)
BYCQ140D	Decoration panel (Included as standard)
BRP069A81	WiFi adaptor for connection to on-line controller
BRC7FA532F	Wireless remote controller
BRYQ140A	Integral PIR sensor for roundflow decoration panel. Enables energy saving functions
BYCQ140DG9	Roundflow cassette decoration panel with self cleaning filter
BYCQ140DGF9	New Roundflow cassette decoration panel with fine self cleaning filter
BYCQ140DW	Roundflow cassette decoration panel - white with white louvres
K.CG.L	Condensing unit guard size 100-140 including RXY5Q
K.CGM	Condensing unit guard size 42-71
K.CWB140-2	Condensing unit bracket - size 100 to 140
K.CWB90-2	Condensing unit bracket - up to size 71, max weight 90kg of ODU
K.DT1	Condensate drip tray for use with K.CWB90-2

Accessory Ref	Description
K.DT2	Condensate drip tray for use with K.CWB140-2
K.RSS	Wireless room mounted temperature sensor and receiver
KDBH055B140	Sealing member for air discharge outlet
KDDP55C160-1	Fresh air intake kit for up to 20% fresh air (Part 1)
KDDQ55B140-2	Fresh air intake kit for up to 20% fresh air (Part 2)
KLIC-DI	KNX Interface for Sky Air and VRV systems
KRCS01-4	Remote room mounted temperature sensor
KRP4A53 and UK.FB2	Unit/group adaptor PCB for remote on/off, status indication and temperature setting
RS-SE	Service and configuration tool for K.RSS
RTD-10 and UK.FB2	Enhanced function PCB for Sky Air and VRV. Duty rotation, Lead Lag control and heating interlock
RTD-20 and UK.FB2	Energy control PCB for Sky Air and VRV
RTD-NET and UK.FB2	Modbus interface PCB for Sky Air and VRV

The present leaflet is drawn up by way of information only and does not constitute an offer binding upon Daikin UK. Daikin UK has compiled the content of this leaflet to the best of its knowledge. No express or implied warranty is given for the completeness, accuracy, reliability or fitness for particular purpose of its content and the products and services presented therein. Specifications are subject to change without prior notice. Daikin UK explicitly rejects any liability for any direct or indirect damage, in the broadest sense, arising from or related to the use and/or interpretation of this leaflet. All content is copyrighted by Daikin UK.



Daikin Europe N.V. participates in the Eurovent Certification programme for Air conditioning (AC), Liquid Chilling Packages (LCP), Air handling units (AHU) and Fan coil units (FCU). Check ongoing validity of certificate online: [www.eurovent-certification.com](http://www.eurovent-certification.com) or using: [www.certiflash.com](http://www.certiflash.com)