

MODULAR VRF 2-PIPE OR 3-PIPE FSXNSE (STANDARD) & FSXNHE (HIGH EFFICIENCY)

Sigma VRF has been specially designed for easier installation, commissioning and maintenance. Its flexible modular system achieves higher power combinations from fewer units, requiring less space, fewer pipe connections and delivering an installer friendly experience. Improved energy efficiency is achieved with a new, revolutionary DC inverter scroll compressor, Sigma shaped heat exchanger and new fan design to improve air flow. All units are compatible with Hitachi's System Free indoor units, including Hydro Free water modules, for the most flexible VRF system on the market.



NEW

FEATURES AND BENEFITS

- Market leading SCOP up to 5.06 and SEER up to 8.33
- Wide product range with single modules available from 8 to 24HP (standard) and 5 to 18HP (high efficiency)
- Combine 4 base outdoor units to achieve up to 96HP with a single system
- Smooth Drive Control adjusts outdoor unit capacity in 0.1Hz increments, expanding the working range down to 5% of maximum capacity for enhanced seasonal efficiency at part loads
- User comfort ensured with variable refrigerant temperature and controllable off coil temperatures to eliminate cold draughts
- Extended height difference of up to 110m between indoor and outdoor units
- Improved static pressure (80Pa) for outdoor unit installation flexibility
- 'Smart Building' ready for future proof installations
- Low noise operation, down -14 db(A)
- Efficient defrost cycles ensure continuous heating to enhance user comfort
- Installation flexibility with indoor units up 150% capacity of outdoor
- Market leading low refrigerant charge
- Motion sensor for up to 14% energy savings with System Free cassettes, ceiling suspended and ducted indoor units.

SYSTEM
FREE

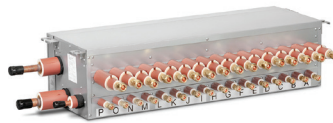
FLEXIBILITY BUILT IN

Hitachi's System Free indoor units can be combined with outdoor units from either our Utopia splits or Set Free VRF ranges for ultimate flexibility.

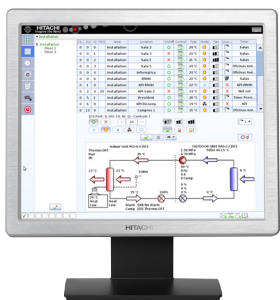
CHANGEOVER BOXES

Hitachi's range of single and multi port CH boxes can be installed or removed as building requirements change to switch from 2 to 3 pipe without changing the outdoor units. Both single and multi port boxes can be used on the same installation for maximum flexibility and adaptability.

- 13% fewer connections than competitor single port CH boxes
- Longer piping lengths
- No drain connections required
- Smallest footprint, lowest height and lightest of main competitor models



Type		Single Branch		Multiple Branch				
Model Name		CH-AP160SSX	CH-AP280SSX	CH-AP04MSSX	CH-AP08MSSX	CH-AP12MSSX	CH-AP16MSSX	
Electrical	Power Supply	1 ~ 230V 50Hz						
	Power Consumption	W	5	5	11.2	22.4	33.6	44.8
	Current	A	0.1	0.1	0.2	0.4	0.6	0.8
Maximum Total Capacity		kW	16	28	44.8	85	85	85
Number of Branches (for Indoor Unit)			1	1	4	8	12	16
Maximum Capacity per Branch		kW	-	-	16	16	16	16
Maximum Connectable Indoor Units per Branch			7	8	6	6	6	6
Dimensions (Height x Width x Depth)			191 x 301 x 214	191 x 301 x 214	260 x 303 x 352	260 x 543 x 352	260 x 783 x 352	260 x 1023 x 352



CS NET MANAGER

- Energy consumption monitoring room-by-room with CS Net central controls.

Set Free Sigma

VRF designed for specifiers, installers and end users

