

IMPROMAT

KLIMA

User Guide

UTI-ERV2

Interface for FUJITSU-GENERAL
ERV units



USAGE

The module can be used as the interface for:

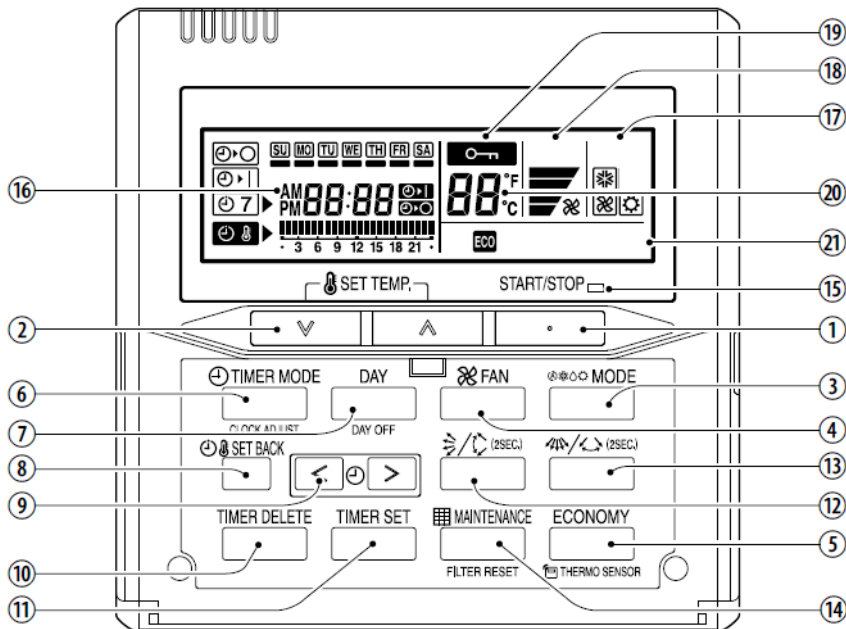
1. "Heat recovery only" mode

- the module acts as an interface between the ERV unit and the UTY-RNNYM wired controller
- the UTY-RNNYM controller can control the fan speed and the damper of free cooling

2. Heat recovery mode with free cooling

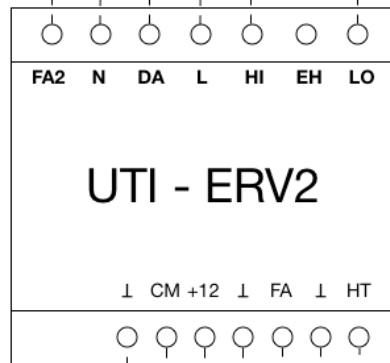
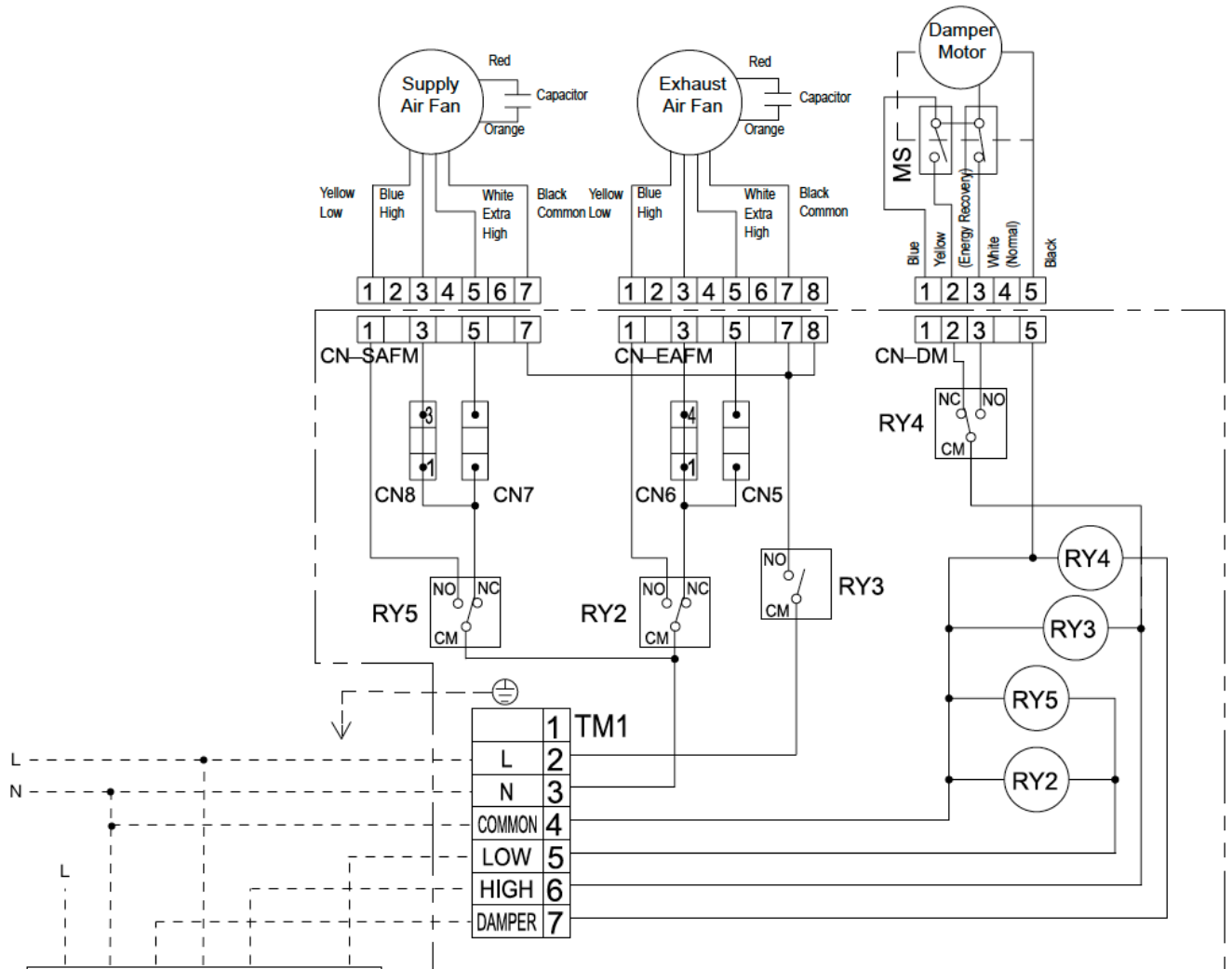
- the module acts as an interface between the ERV unit and the UTY-RNNYM wired controller
- the UTY-RNNYM controller can control the fan speed, the damper of free cooling, and outdoor temperature sensor for economic cooling option

REMOTE CONTROLLER



- | | |
|------------------------------------|---------------------------|
| ① Start/Stop Button | ⑬ N/A |
| ② Set Temperature Button | ⑭ N/A |
| ③ Master Control Button | ⑮ Operation Lamp |
| ④ Fan Control Button | ⑯ Timer and Clock Display |
| ⑤ Recovery ventilator ON/OFF | ⑰ Operation Mode Display |
| ⑥ Timer Mode (CLOCK ADJUST) Button | ⑱ Fan Speed Display |
| ⑦ DAY (DAY OFF) Button | ⑲ Operation Lock Display |
| ⑧ SET BACK Button | ⑳ Temperature Display |
| ⑨ Set Time Button | ㉑ Function Display |
| ⑩ DELETE Button | |
| ⑪ SET Button | |
| ⑫ N/A | |
- ECO** Recovery ventilator ON

WIRING DIAGRAM



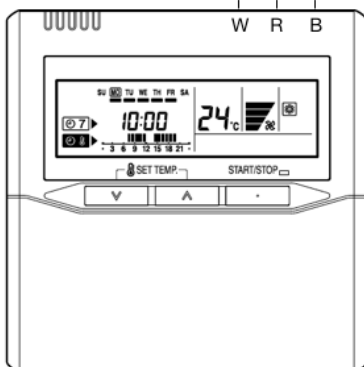
Upper terminal box (connection to ERV unit):

- FA2** – external input for ON/OFF of ERV unit * (220 V – ON, 0 V – OFF)
- N** – neutral wire of module power supply
- DA** – controlling of the damper of ERV unit
- L** – live wire of module power supply
- HI** – controlling of fan speed (high speed)
- EH** – controlling of fan speed (medium speed)
- LO** – controlling of fan speed (low speed)

Lower terminal box:

- (GND)** – grounding wire for the contact FA
- CM** – connection port for wired remote controller
- +12** – connection port for wired remote controller
- (GND)** – connection port for wired remote controller
- FA** – external input for ON/OFF of ERV unit* (connected – ON, disconnected – OFF)
- (GND)** – connection port for outdoor temperature sensor
- TH** – connection port for outdoor temperature sensor

* = use only one input, either on the upper terminal box or on the lower terminal box



INTERFACE

In “heat recovery only” mode, the following functions are available at the wired remote controller:

- button **START/STOP** (to start up the ERV unit)
- button **FAN** (to change the fan speed)
- button **ECO** (controlling of the damper for free cooling, if the ECO mode is ON – the heat recovery is on, if ECO mode is OFF, free cooling is running).
- function **TIMER** is available

When the outdoor temperature sensor is connected into the UTI-ERV module, the economical ventilation feature is available. This feature can be set by the MODE button. You can choose the following modes:

- **Regular mode** (the “propeller” symbol is shown at the controller display), ERV unit is working in “heat recovery only” pattern.
- **Summer mode** (the “snowflake” symbol is shown at the controller display – cooling), the damper is controlled automatically. The required temperature is set on the controller. When the indoor temperature is higher and the outdoor temperature is lower than the set temperature, the free cooling mode is switched on.
- **Winter mode** (the “sun” symbol is shown at the controller display – heating), the damper is controlled automatically. When the indoor temperature is lower and the outdoor temperature is higher than the set temperature, the mode free cooling is switched on.