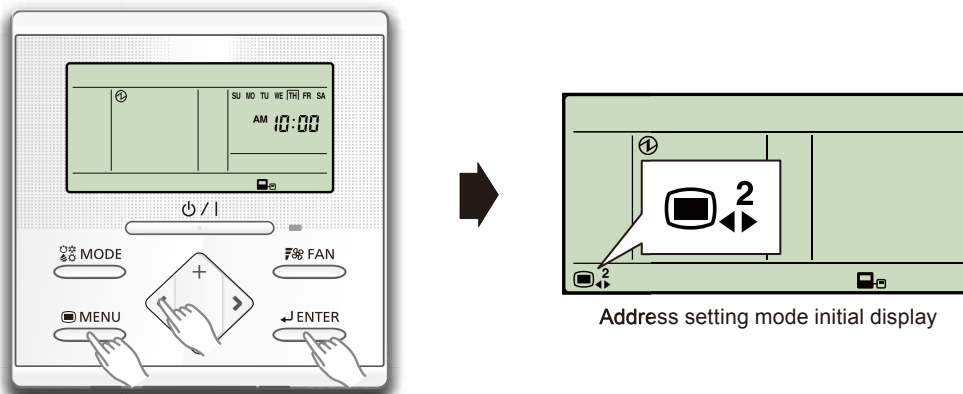
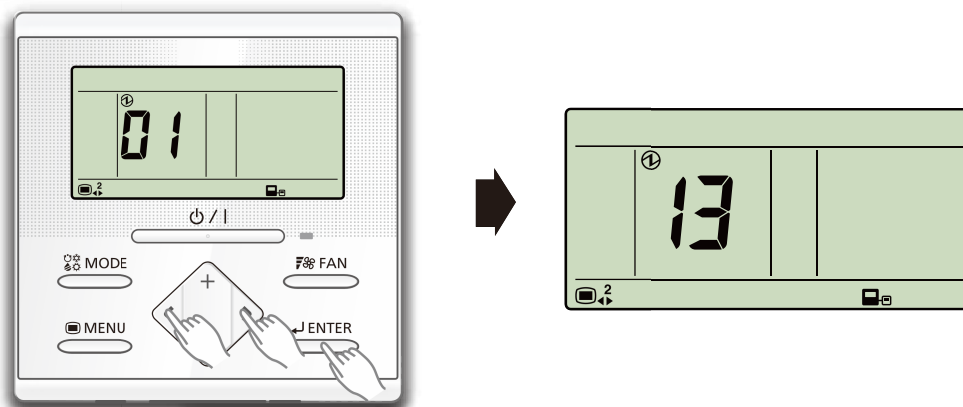


## ■ SWITCHING SELECTION OF ADDRESS SETTING MODE

- 3) To activate the address setting mode, hold down the three buttons of "MENU", "<" and "ENTER" at the same time for 2 seconds or longer.

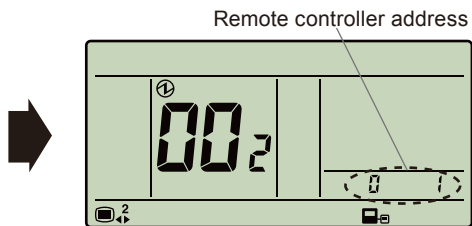
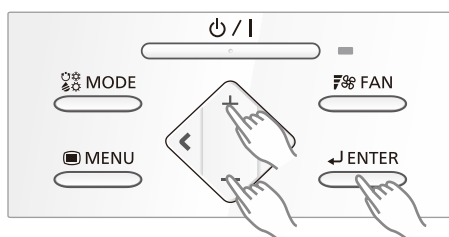


- 4) Select the "13" in Menu 2 Settings. Then press the "ENTER" button.



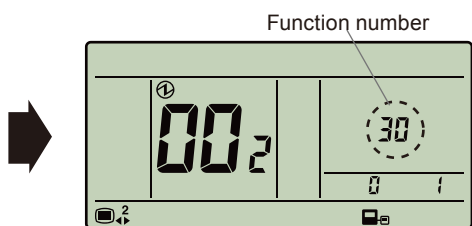
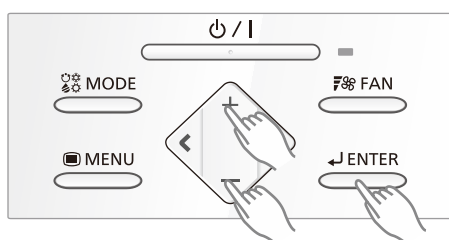
## ■ FUNCTION SETTING

- 5) Pressing the "+" or "-" button, select a remote controller address (select the indoor unit you want to operate). Then press the "ENTER" button.

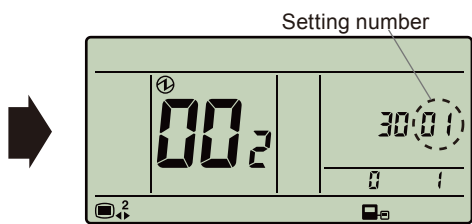
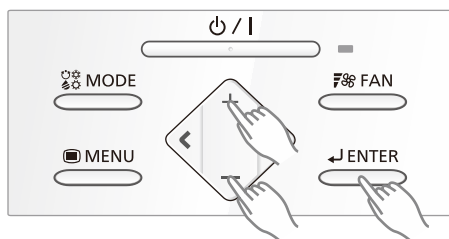


Ex.) When remote controller address "01" is selected

- 6) Pressing the "+" or "-" button, to select the function number. Then press the "ENTER" button.



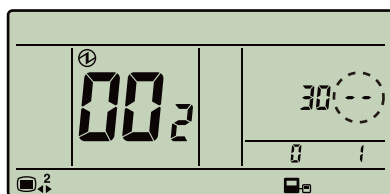
- 7) Pressing the "+" or "-" button, to select the setting number. Then press the "ENTER" button.



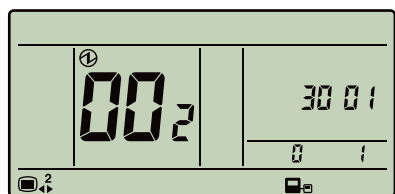
Ex.) Function number : 30,  
Setting number : 01

ERROR

GOOD



- When the data was not set up on the indoor unit (-- is displayed.)
- Set up the data again.



- When the data was normally set up on the indoor unit.

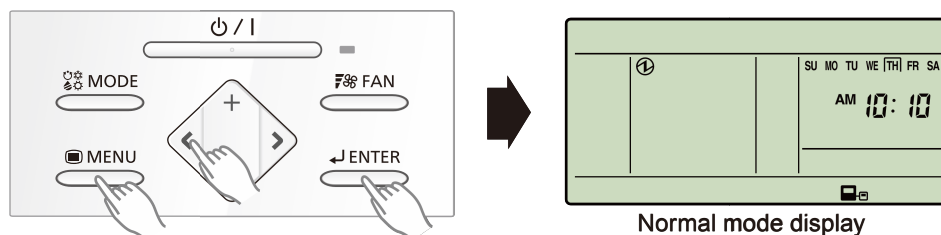
- 8) Pressing the "ENTER" button to return to the address selection screen. If setting has been completed, pressing the "MENU" button to return to the Menu 2 item selection screen.

## ■ FUNCTION DETAILS

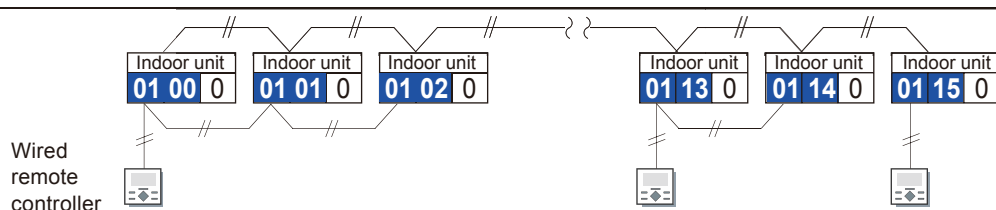
Refer to 2-8. FUNCTION DETAILS.

## ■ COMPLETION OF ADDRESS SETTING MODE

- 9) To clear the address setting mode and return to the normal mode display, hold down the three buttons of "MENU", "<" and "ENTER" at the same time for 2 seconds or longer.



## ■ SETTING UP EACH INDOOR UNIT



Repeat the procedures in steps 1) through 14), and set up the indoor units requiring address setting.

## ■ RESET THE POWER AFTER SETTING UP ADDRESS OF ALL INDOOR UNITS

### Important

- \* If the reset is not performed, address can not be read in normally.
- \* After all the addresses have been set, the circuit breaker needs to be switched off for at least 2 minutes.  
After the 2 minutes has passed, power can be restored.
- \* The set address is stored in the PCB and will remain in memory even when the power is turned off.  
However setting address is effective after power reset.  
Record the address set in the indoor unit on a label, etc., and affix the label to the unit so it can be used for after-sales service operations.